



Thank you for attending the Click Thru Job Fair!

In addition to the positions posted on these flyers, be sure to check out company websites (flyers were created in advance of the fair to allow packets to be assembled; so, other jobs may be listed on websites too). As you think about next steps in your job search, consider how the following resources might help you.

Fox Valley Job Centers

Website: www.foxvalleyjobcenters.com

At this time, the following Fox Valley Job Centers are open via telephone, email and other technology. Experienced staff can assist with your job searching, referrals to training programs, career exploration and information about community resources. Give us a call to determine how we can help.

Fond du Lac Job Center
Phone: 920-929-3900

Fox Cities Job Center
Phone: 920-997-3272

Workforce Innovation & Opportunity Act (WIOA)

Serving people ages 14 and older. Provides individualized career plan, including personal assessment, job search tools, training opportunities and guidance to reach goals. Services based on eligibility but can include: funding for tuition, books, transportation and mileage, childcare and other support services as needed.

To learn more contact: KellyHudson.letc@gmail.com

Office of Veteran Employment Services (OVES)

<https://jobcenterofwisconsin.com/veterans/>

Advances employment opportunities for Wisconsin veterans through targeted business engagement and Intensive Employment Services to eligible veterans and their spouses.

Contact: Jeffrey.Murphy@dwd.wisconsin.gov

Division of Vocational Rehabilitation (DVR)

The Division of Vocational Rehabilitation (DVR) is a federal/state program designed to obtain, maintain, and advance employment for people with disabilities by working with DVR consumers and other partners.

Contact: Samantha Pfeiffer samantha.pfeiffer@dwd.wisconsin.gov (920) 252-3579
or Sherry Gundlach sherry.gundlach@dwd.wisconsin.gov (920) 979-0802

Wisconsin Senior Employment Program (WISE)

The WISE Program is a community based training program that provides subsidized, service-based training for low-income persons 55 or older.

Contact: mbryden@fvwdb.com

Apprenticeship Training

<https://dwd.wisconsin.gov/apprenticeship/individuals.htm#1>

Apprenticeship is a great way to move your career forward! Apprenticeship gives you the ability to move your career forward through structured training while trainees earn a living and hone skills on the job.

Contact: Christopher.landreman@dwd.wisconsin.gov

Local Technical Colleges

If you are interested in learning more about training programs, boot camps, certifications and classes at local technical colleges, visit the following.

Fox Valley Technical College
www.fvtc.edu
1-800-735-3882

Moraine Park Technical College
<https://www.morainepark.edu/>
1-800-472-4554

Forward Service Corporation

<https://fsc-corp.org/>

Forward Service Corporation provides employment and training services. Services include Wisconsin Works (W-2), Foodshare Employment and Training (FSET), Road to Livelihood (RtL), Job Access Loan, WETAP, and Emergency Assistance.

Contact: SAdams@fsc-corp.org

CAP Services & ADVOCAP

ADVOCAP: <http://www.advocap.org/> / CAP Services <https://capservices.org/>

By region, community action agencies provide an array of programs designed to reduce poverty and increase social and economic self-sufficiency. CAP Services operates in Marquette, Outagamie, Portage, Waupaca, and Waushara Counties; ADVOCAP serves Fond du Lac, Green Lake and Winnebago Counties.

United Way 2-1-1

United Way 2-1-1 is a free resource and information hub that connects people with employment, health, human service and disaster services by phone, text, chat and search-able on-line database 24 hours per day, 7 days per week. Dial 211 for assistance

Partnership Community Health Center

<https://www.partnershipchc.org/>

Primary health, dental and integrated behavioral health clinic that accepts all insurance and has a sliding scale for those who meet eligibility. In addition, insurance navigators help make informed decisions regarding health insurance (including COBRA options or bridging insurance between employer provided insurance).

Free WiFi Locations

To see a list of free WiFi access points visit the Public Service Commission list at

<https://maps.psc.wi.gov/Apps/PublicWiFiLocations/index.html>

Job Center Partners are Equal Opportunity Employers and Service Providers

A proud partner of the  **americanjobcenter** network



**Great People,
Great Products,
Great Processes,
Great Partnerships**

A to Z Machine Company, Inc. is a growing company with incredible opportunities for positive problem solvers and self-starters who want to grow their career and continuously grow their knowledge.

Opportunities

2nd Shift Maintenance mechanic

2nd Shift Machinists

We are looking for people to join our team who share the same values and the same vision and passion for machining that we do. We encourage skilled applicants of all gender, diversity and abilities to apply.

100%
Employee
Owned

Contact Us

2701 E. Winslow Avenue,
Appleton, WI 54911

atozmachine.isolvedhire.com/jobs/

join our TEAM

Why Agropur?

Comprehensive benefits that start the first day of the month following one month of employment.



Health, Life,
Dental, Vision



Paid
Holidays



401(k) with
Company Match



PTO From
Day 1

Maintenance Technicians

Full time

10:00 pm – 6:00 am
(Sun – Thur)

2:00 pm – 10:00 pm
(Mon – Fri)

6:00 pm – 6:00 am
(2-2-3 rotational schedule)

Added Benefits

* **Shift Differential**

* **Immediate pay increases within first year of employment**

* **Tuition Reimbursement**

We are an **employee focused organization**

that promotes from within and is looking for enthusiastic, team-orientated employees to join our growing team.



5th most successful dairy company and cooperative in North America

Agropur - Little Chute Plant
is a major supplier of mozzarella sticks



To learn more or apply online, please visit
agropurcareers.us



 facebook.com/agropurUS

 instagram.com/agropur_us_ops

 twitter.com/agropur_us_ops

 linkedin.com/company/agropur-us-operations



Agropur

2701 Freedom Rd
Appleton, WI 54913

ADDITIONAL QUESTIONS?

Chelsea.Huttsell@agropur.com
or 920-224-2418

AA/EEO – Minority/Female/Disability/
Veteran/Sexual Orientation/Gender Identity



BUILD YOUR CAREER



Family-Owned, Community Focused.

We are a family-owned organization underpinned by strong community focused values, a longstanding reputation from exceptional quality and stability in our markets. We are fully committed to our Core Purpose of creating and maintaining systems that save lives, improve the environment, and ensure personal comfort and well-being.

Join a company that values trust, integrity and commitment.

Culture

We are both small enough to be transparent from the top yet large enough to have strength and power of infrastructure, and a strong heritage. We are innovative and we nurture a culture built on autonomy for our people, combined with support to get work done safely and to the highest standard.

Rewards

We are an exciting organization. As we continue to grow, we aim to give our people support to build on their experience and skills.

We also offer a rewarding environment, unrivaled benefits, and the opportunity to work with people who will care about you as an individual as well as being focused on quality, excellence and innovation.

Ahern is an Affirmative Action / Equal Opportunity Employer and encourages veterans, women, minorities, and disabled individuals to apply.

WE RECRUIT FOR OVER 180 CAREER POSITIONS

Pre-Apprenticeships

Sprinkler Fitter Apprenticeships

Project Management

Engineering

Sales and Administration



Building Comfort for Generations.

aherncareers.com



JOIN OUR ALLIANCE

Wisconsin's
PREMIER

Paint & Powder Coater



Menasha / Waupaca

Production Opportunities - No Experience Necessary



- 1st or 2nd Shift
- Full Benefit Package
- New Hire Bonus
- Weekly Pay
- Paid Vacation after 90 Days

*Come hang
with us!*

Apply on-line at: www.alliance-industries.com

Equal Opportunity Employer





/ Now Hiring

*The worlds largest manufacturer of
commercial laundry equipment is hiring!*

**Hiring 2nd Shift Production
Team Members for Assembly**

Alliance Laundry Systems prides itself on
providing a safe workplace for all employees.
Come join our growing team!



\$16.50/hr.

Starting wage.

\$1.25

2nd shift premium.



Vacation starts after
90 days.

\$2,000

Retention bonus.

Benefits include:

Medical, Dental, Vision, Life Insurance, Retirement Savings Plan, Educational Assistance, Referral Bonus, 11 Paid Holidays, Career Growth Opportunities



Apply on-line at alliancelaundry.com/hiring

Alliance Laundry Systems is an Equal Opportunity Employer of Minorities, Females, Protected Veterans, Individuals with Disabilities and persons of all Sexual Orientations and Gender Identities.

LET'S WORK TOGETHER

Jobs that fit your life.

Earn **\$15/hr** or more.
Immediate hourly positions available.

Grow with the Amazon team in Oshkosh and Greenville.
Visit **amazon.com/madisonhourlyjobs** now to learn more
or text **MADISONNOW2** to **77088** for job alerts.

Amazon is an equal opportunity employer.



We're HIRING!

Your opportunity to grow with the global leader in packaging manufacturing!

Amcor, the leading global packaging manufacturer, has ambitious plans to grow in the Fox Valley in 2021 and beyond. To support this expansion, we have 50+ immediate production job openings.

Open positions include:

- Machine assistants
- Machine operators
- Maintenance technicians
- ..And many more

Thursday, January 14th

From 8 a.m. to 5 p.m.

Oshkosh Locations

2251 Badger Ave

2450 Badger Ave

3500 N Main Street

3550 Moser Street

GREAT BENEFITS, INCLUDING:

- Competitive pay starting at \$16./hr with premiums
- Advancement opportunities
- Medical, dental, vision, and life insurance
- Short and long-term disability
- 401(k) with company match
- Quarterly bonuses
- Paid vacation
- Wellness program
- Tuition assistance program
- Safety shoes and safety glasses reimbursement
- Safe working environment

Submit your application at:

www.amcor.com/careers and
www.indeed.com/q-Amcor-jobs.html

Amcor is an Equal Employment Opportunity (EEO) employer. It is the policy of the Company to provide equal employment opportunities to all qualified applicants without regard to race, color, religion, sex, sexual orientation, gender identity, national origin, age, protected veteran or disabled status, or genetic information.



NOW HIRING!

KONZ WOOD PRODUCTS



Scan this code to see our current openings at KWP!

Who We Are- Established in 1905 as a family-owned farm sawmill operation, Konz Wood Products quickly grew into a respected Midwest cheese box supplier. Over the next century the company expanded its operation to include the production of pallets, skids, shipping crates and related wood packaging.

Benefits- Company Paid Life Insurance, 401k Match and Profit Sharing, Vacation, Birthday Program, Paid Holidays, Flexible Leave of Absence, Employee Assistance Program, Bonus Plans, Safety Incentives and Events, Annual Family Picnic, Annual Holiday Lunch, Safety Shoes Reimbursement (Up to \$150/year), Employee Referral Program, and more!



616 N. Perkins St, Appleton, WI
(920) 734-7770

angela@konzwoodproducts.com

TOWER PALLET

5211 County Rd. X, De Pere, WI
(920)-336-3495
tpc@towerpallet.net

Tower Pallet Company



Scan this code to see our current openings at TPC!

Who we are- Tower Pallet was founded over five decades ago while occupying a converted schoolhouse. The company has grown from its humble beginnings to a 25,000 Sq. Ft facility.

Benefits - Company Paid Life Insurance, 401k Match and Profit Sharing, Vacation, Paid Holidays, Flexible Leave of Absence, Employee Assistance Program, Bonus Plans, Safety Incentives and Events, Safety Shoes Reimbursement (Up to \$150/year), Employee Referral Program, and more!

Konz Wood Products and Tower Pallet Company are Equal Opportunity Employers. The Companies conduct their employment practices without regard to age, race, creed, color, marital status, sexual orientation, national origin, ancestry, arrest and/or conviction record or membership in the military service, national guards or veteran status, or any other discriminatory basis prohibited by state or federal law and shall duly consider reasonable accommodations for those with physical or mental disabilities if the employee or applicant is qualified. The Companies will take affirmative action to ensure that qualified protected class applicants are employed and treated fairly during employment. This policy of nondiscrimination applies to all employee categories and to all phases of employment including, but not limited to, recruitment, advertising, selection, promotion, demotion, training, layoffs, terminations, benefits, and salary administration.



- Position Available:** Furnace Operator (General Labor)
- Location:** Oshkosh Plant (4000 State Highway 91, Oshkosh, WI 54904) – 920-235-2001
- Starting Wage:** \$17/hour (days) / \$17.75/hour (nights)
**** First year employees can earn up to \$50,000 in total compensation (incl. bonus & benefits)*
- Benefits:** Medical premiums covered by company (90-95%), full coverage dental, vision, short-term disability, long-term disability, life insurance, tuition assistance program (\$5,250/year), monthly and quarterly bonus opportunities.
- How to Apply:** Send resume to careers@appliedprocess.com, or visit the plant to complete a job application
-

Position Description Summary:

The Furnace Operator is responsible for the successful loading and unloading of parts. This will include the reading of lineups to determine the arrangements of various loads. The Furnace Operator also has an awareness of material in furnaces to determine sequence of loading. This individual will learn to operate a forklift/hi-lo to transport baskets and parts throughout the plant location.

Essential Function(s) of the Position:

The duties listed below are the specific duties and tasks that someone in this position must accomplish.

- Operation of heat-treat equipment
- Read lineup to determine the arrangement of various loads
- Frequently lifts, carries or otherwise moves and positions parts weighing up to 40 lbs. when loading and unloading parts from heat-treated baskets
- Typically operates a forklift/hi-lo to transport baskets
- Inspects parts to ensure quality compliance
- Creates shippers and certifications on completed orders
- Responsible for safety and general housekeeping in work area

Education, Experience and Qualifications:

- High School Diploma required
- Ability to demonstrate a High School level of reading, writing, and arithmetic skills.
- Previous forklift/hi-lo experience is an asset but not required
- Ability to read/follow detailed work instructions

Physical Demands:

The physical demands described here are representative of those that an employee must be able to accomplish in order to successfully perform the essential functions of this position. Reasonable accommodations may be made to enable individuals with disabilities to perform the essential functions of this position. This job requires:

- Presence at the employer's site during regularly scheduled shifts and business hours.
- Frequent walking within a plant environment.
- Close, distance, color, and peripheral vision, depth perception and the ability to adjust focus.
- Regular use of hands to manipulate, handle, feel or operate objects, tools or controls, reach with hands/arms.
- Regular standing, talking, hearing, climbing or balancing, and lifting or moving up to 40 pounds.
- May be exposed to heat, fumes, noise, and humidity, etc. *Safety equipment is provided.*
- Regular stooping, kneeling, crouching and crawling.

Candidate Requirements:

Candidates must successfully pass drug screening, a physical examination, and undergo reference/background checks prior to Offer of Employment. Position requires physical ability to lift up to 40 lbs.



ATI Forged Products has expanded operations to Appleton! This is an exciting opportunity to become a crucial part of our safety and quality focused team and work on forgings for the jet engine aerospace market

WHY JOIN ATI?

- Current openings are 1st shift Monday-Friday
- Prefer a different shift? Due to continuous growth, opportunities on 2nd and 3rd shift will be available in the near future
- Safe, clean climate controlled environment
- Brand new state-of-the-art technology
- Career development and meaningful work
- 11 paid holidays per year
- Benefit eligibility the 1st day of the month after hire

OPEN POSITIONS

Apply online:

<https://www.atimetals/careers/appelton>

- Non Destructive Technician (NDT) Entry Level
 - Strong computer and math skills and a dedication to continuous learning required
 - Unique opportunity to utilize water immersion technology
 - Wage increases as you progress in training
- CNC Machine Operator
 - Minimum 3 years of experience working in a manufacturing environment as a machine operator or with mechanical equipment preferred
 - Knowledge of basic machining principles
- Material Technician
 - Previous forklift and shipping/receiving experience preferred
 - Must be willing to cross train in Quality inspection

Site Contact: Connie Kais, HR Process Leader
connie.kais@atimetals.com

ATI Forged Products is an equal opportunity employer

JOIN OUR TEAM

1st & 2nd shift openings in FDL!



ABOUT US:

Do you want to join a team that makes products you can be proud of? If you answered yes, then apply for one of our jobs at Atlas Molded Products and get **AMP'd!**

Atlas, formerly known as ACH Foam Technologies, has been part of the Fond du Lac community for over 30 years. We make essential products that keep us, our families and our friends safe and warm. Much of what we make goes into other products that make life happier - from foam coolers that ship essential medicines and rigid insulation that protects and insulates homes, to foam blocks that strengthen and protect roadways and bridge abutments, and much, much more!

JOINING OUR TEAM:

- The safety of our employees is our number one priority, therefore we conduct drug screens and background checks.
- We succeed as a team and our best work happens when you are here! Great attendance is important and appreciated by our team members.
- Our work offers you the opportunity to use both mental and physical abilities – you won't be bored!
- Do you have initiative? We provide training and mentoring to advance your skills and career!

ABOUT OUR JOBS:

- 1st and 2nd shift positions available
- Staggered start times based on the department
- Jobs include machine operators and production associates
- Daily and weekend overtime probable

WE OFFER:

- Commitment to your success and a job you can be proud of
- Regular reviews and wage increases
- Starting pay of \$13 - \$16 per hour depending on the job and your experience
- Shift premium for 2nd shift jobs
- A monthly bonus based on attendance and performance
- Recruitment bonuses if you refer and we hire your friends and family
- Paid vacation and holidays to use THIS YEAR and increase next year
- Health, dental, and vision insurance for you for about \$20 per week
- Company paid life insurance and short term disability insurance
- 401k retirement plan with company match
- Company paid assistance programs including crisis intervention hotline, and legal & financial resources
- Opportunities to learn and grow

Equal Employment Opportunity: Atlas complies with all federal and state equal employment opportunity laws. In all hiring and employment practices, Atlas makes every effort to ensure that it does not unlawfully discriminate against employees and applicants. Accordingly, Atlas is committed to providing equal opportunity employment for all employees and applicants regardless of race, color, religion, sex, age, gender, sexual orientation, nation origin, citizenship status, disability, genetic information, pregnancy, military status, or other protected status where otherwise qualified. In locations where state laws have additional protected classes, Atlas will abide by those laws.

Atlas values and promotes diversity in the workplace. Diversity plays an important role in attracting the widest pool of qualified applicants, fostering greater innovation and creativity, and enhancing our communication and relationships with our customers and the community. Diversity is one of the Company's greatest strengths.

APPLY ONLINE!

[https://recruiting.adp.com/srcar/public/RTI.home?
c=1170751&d=ExternalCareerSite%C2%A0%C2%A0](https://recruiting.adp.com/srcar/public/RTI.home?c=1170751&d=ExternalCareerSite%C2%A0%C2%A0)



NOW HIRING!

Come join a company in Fond du Lac where our Work Moves Us to create the best park and playground products in the industry.

VERY COMPETITIVE BENEFITS PACKAGE & 401K MATCH

First Shift hours: 7:00 am to 3:30 pm, Monday through Friday

Third Shift hours: 8:30 pm to 7:00 am, Monday through Thursday night



Welding



Metal Fabrication & Metal Finishing



CNC Tube Laser Operator



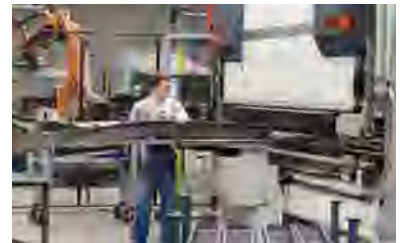
Powder Coat Painter



**Interactive Playground
Event Assembly**



**Playground Rope
Net Assembly**



**CNC Turret &
Break Press Operators**



CNC Pipe Cell Technician



CNC Router Operator



Shipping & Distribution Center

Burke
PLAY THAT MOVES YOU.

APPLY AT BURKECAREERS.COM
920.933.6710 • burkejobs@bciburke.com

Equal Opportunity Employer

Trademark(s) are the property of BCI Burke Company. © BCI Burke Company 2020. All Rights Reserved.



Fond du Lac, WI

ARE YOU READY?

Join the BK Family!

BIG KIDS. BIG TOYS. BIG RESULTS.™

Perks

Flexibility for Family Schedules
Casual Dress Code
Climate Controlled Facility
High-Tech Equipment

Fun

Ice Cream Treats
Cookouts, Potlucks & Outings
Company Anniversary Luncheon

Benefits

Medical Insurance
Dental Insurance
Vision Insurance
401(k) Retirement Plan
Paid Holidays
Vacation

Positions:

Screen Press Operator
PrePress Screen Prep Tech
Laser Operator
Quality Inspector

Contact us to:

request a job description or send
your resume. Indicate position.

Email: info@bklaser.com

Subject Line: Employment

www.bklaser.com

Equal Opportunity Employer



Laser
Cutting



Digital
Printing

Fabrication

Join Our Team!



County government plays an important role in the lives of individuals and families. Counties provide public safety, management of courts and jails, maintenance of roads, public health and human services, land conservation, property tax collection, elections, vital records, and oversee many other programs.

Calumet County offers an excellent work-life balance, as well as high-achieving schools, and safe and affordable communities.

Employment Opportunities

Visit our website, www.calumetcounty.org, to view the position descriptions, wages, benefits, and apply for open positions. Positions open until filled or accepting applications until deadline noted on website.

Full-Time:

- Behavioral Health Therapist
- Correctional Officer (Female)
- Finance Director
- Physical Therapist (Birth to 3 Program)

Part-Time and Casual:

- Meal Site Manager (PT)
- Psychiatric Nurse (Casual)

Benefits*

**Offered for qualifying positions*

- Competitive Pay
- Health, Dental, and Vision Insurance
- Life and Disability Insurance
- Wisconsin Retirement System
- Deferred Compensation Program
- Paid Time Off/Vacation



For more information regarding Calumet County positions, please contact:

Calumet County Department of Administration
Human Resources Division
206 Court Street | Chilton, WI 53014
(920) 849-1611 | Toll Free (833) 620-2730, Ext. 2005
Email: Victoria.halbach@calumetcounty.org

An Equal Opportunity Employer. If you need any accommodations during the recruitment or employment process because of a disability, please notify the Human Resources Division, so appropriate accommodations can be made.



JOIN OUR TEAM!

Greenville, WI

N1352 County Rd CB
Greenville, WI 54942
920.757.1537

We're hiring in the Rental Division!

Garment Hanger 1st & 2nd Shift, Bulk Folder 2nd Shift,
Loader/Unloader 2nd Shift, Route Service Sales Rep, Sanis
Route Service Sales Rep, Assistant Route Service Sales Rep

Become a Cintas employee-partner and enjoy:

- Competitive pay
- 401(k), profit sharing, and employee stock ownership
- Comprehensive benefits (medical, dental, vision)
- Paid time off and holidays
- Limitless opportunities

To learn more about our culture, visit us on social media!

 Cintas  Cintas  CintasCorp  CintasCorp

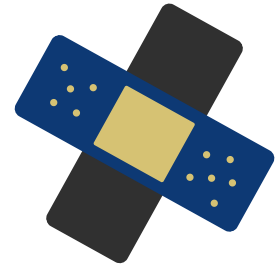
careers.cintas.com

Cintas Corporation is an EEO/Affirmative Action Employer and will make all employment-related decisions without regard to race, color, religion, sex, sexual orientation, gender identity, national origin, disability or protected veteran status.

CINTAS[®]
READY FOR THE WORKDAY[®]



**NOW HIRING
CAREGIVERS IN
YOUR AREA**



\$1,000

SIGN ON BONUS

POSITION DETAILS:

- ~ FULL-TIME AND PART-TIME POSITIONS AVAILABLE
- ~ NO EXPERIENCE NECESSARY
- ~ FLEXIBLE SCHEDULES
- ~ COMPETITIVE PAY

- ~ PAID TRAINING
- ~ BENEFITS PACKAGE
- ~ RETIREMENT PLAN
- ~ PAID TIME OFF
- ~ C.N.A CLASS REIMBURSEMENT PROGRAM

**Apply online at claritycare.org/apply
or call (920) 236-6560 x1415**

Text "Careers" to (920) 345~5595 to contact our Recruiters

Clarity Care is an Equal Opportunity Employer

CURRENT JOB OPENINGS

Part Time & Full Time Caregiver

- No Experience Necessary
- Paid Training
- Apply Today! Scan the QR Code or go to covey.org/careers



COVEY BENEFITS

We Offer Some Pretty Great Benefits, They Include:

- Competitive Wages, Starting at \$12+
- Medical, Dental, & Vision Insurance
- Paid Time Off
- Paid Holidays
- Retirement Plan & Company Match
- Paid Training
- Flexible Scheduling
- Wear Jeans to Work
- Build connections with Clients
- Get Paid to Participate in Fun Outings with Clients

We Provide Training for:

- On the Job
- CPR/First Aid
- Medication Administration
- Standard Precautions
- Fire Safety

Find Out More: covey.org/careers/



Covey

Everyone who walks through Covey's door is cared for. This promise is extended to our clients as well as their families and Covey team members. We strive to build a more inclusive community by empowering individuals with developmental disabilities to achieve greater independence.

- We are an Equal Opportunity Employer -



Email: info@covey.org **Phone:** 920.292.1124 **Visit:** Covey.org



255 Spring St
Clintonville, WI 54929

CREATIVE CONVERTING IS LOOKING FOR HARD-WORKING, RELIABLE, AND EAGER TEAM PLAYERS TO CREATE BEAUTIFULLY DESIGNED PLATES, NAPKINS, TABLECOVERS & MORE!

CURRENT OPENINGS:

- MACHINE OPERATORS
- MAINTENANCE TECHNICIANS
- FLEXO TISSUE OPERATORS
- FLEXO TISSUE ASSISTANTS

APPLY ONLINE AT:

HOFFMASTERGROUPINC.COM/CAREERS

WHAT WE OFFER:

- 12 HOUR 2-2-3 ROTATING SHIFTS TO OFFER WORK-LIFE BALANCE
- COMPETITIVE PAY, \$16.50 STARTING RATE
 - MAINTENANCE STARTING PAY IS BASED ON KNOWLEDGE & EXPERIENCE
- QUARTERLY GAINSHARING PROGRAM
- MEDICAL, DENTAL, VISION
- PAID VACATION, AVAILABLE TO USE UPON HIRE
- 401K
- 11 PAID HOLIDAYS
- FUN, FRIENDLY ATMOSPHERE!


255 Spring Street | Clintonville, WI 54929
P: (715) 823-3104 | F: (715) 823-6364

Equal Opportunity Employer/Protected Veterans/Individuals with Disabilities



115 E Arndt St
Fond Du Lac, WI
54935

*We are Hiring
Join Our
Team!*



**Contact (920) 923-7040
with any questions!**



Apply directly on our
Facebook

Visit our Website:
www.crossroadscarecenter.com

Open Positions

- CNA Weekend Warrior \$20/hr
- CNA - Part time AM, PM, NOC Shifts. Sign-on bonus.
- RN/LPN - Full time and Part time. \$20,000 sign-on bonus!
- Dietary Aide

CCC is an Equal Opportunity
Employer



We Are Hiring At Our Kohler and Green Bay Locations!

Available Opportunities in:

- Manufacturing
- Culinary
- Spa
- Housekeeping

Enjoy flexibility and camaraderie in an innovative, dynamic environment throughout the year. Apply online at kohlercompany.com/careers or email us at kohlerjobs@kohler.com.

It is Kohler's policy to recruit, hire, and promote qualified personnel in all job classifications without regard to race, creed, religion, age, sex, sexual orientation, gender identity or expression, marital status, national origin, disability or veteran status. If, as an individual with a disability, you need reasonable accommodation during the recruitment process, please contact kohlerjobs@kohler.com. Kohler Co. is an equal opportunity/affirmative action employer.

DESTINATION
KOHLER

LODGE KOHLER

KOHLER®



Work at Evergreen! A great nonprofit healthcare organization in Oshkosh with a wonderful reputation in the community for over 50 years!

Open Positions

Assisted Living Resident Assistant—No certifications required
(Wages start at over \$12.50/hr)

CNA – Full and Part time positions
(Wages start at over \$14/hr)

RN/LPN—Casual Call and Night shift

In-Home Caregiver—No certifications required, flexible hours

Hospitality Aide—AM/PM shift available

Why work at Evergreen?

- Pay negotiable based on experience
- Shift differentials apply to PM and night shift
- Additional pick up pay for shifts/hours picked up outside of master schedule
- Receive regular performance reviews and eligibility for wage increases
 - Evergreen-funded college student savings fund available
- Enhance your skills through continuing education opportunities

Apply online!

<https://www.evergreenoshkosh.com/careers/>

Contact Kendra Arguello @ 920-237-2102 with any questions

Evergreen Retirement Community (Evergreen) is an equal opportunity employer and believes in equal opportunity for all employees and applicants. Accordingly, all employment decisions are based on the principles of equal opportunity. These decisions include recruitment, selection, promotion, transfer, discipline, compensation, benefits, training and other personnel actions involving persons in all job titles and shall occur without regard to race, creed, color, religion, sex, age, ancestry, national origin, disability, genetic information, military service, sexual orientation, marital status, arrest and conviction records, the use or nonuse of lawful products off the employers' premises during non-work hours, declining to attend meetings or participate in communications about religious or political matters or any other characteristic protected by law. All persons and organizations having occasion either to refer persons for employment or to recommend Evergreen are advised to do so without regard to the characteristics listed above.



Start your journey.

FedEx Ground is **NOW HIRING** package handlers for multiple shifts.

Location:

Full-time and flexible schedules available in some locations.

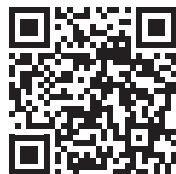
Compensation

- Multiple pay increases within the first six months of employment
- Tuition reimbursement program
- Career advancement opportunities
- Weekly paycheck/direct deposit

Qualifications

- Must be at least 18 years of age
- Must be able to load, unload and sort packages, as well as perform other related duties

FedEx Ground is an equal opportunity/affirmative action employer (Minorities/Females/Disability/Veterans) committed to a diverse workforce.



For more information, please visit
GroundWarehouseJobs.
fedex.com



Festival Foods is hiring motivated individuals who are passionate about guest service, delivering results and who really know how to keep things fun!

Location(s): Appleton- Northland (1200 W Northland) & Appleton- Darboy (W3195 Van Roy Rd), Menasha (1355 Oneida St), Neenah (647 S Green Bay Rd), Oshkosh (2415 Westowne Ave)

Current Openings: Department Leaders, Shift Managers, Cashiers, Café Clerks, Click N Go, Cake Decorators, Deli Clerks, Meat Counter and MORE!



Flexible Schedules!

Great Perks:

- ✓ Bank bucks for school through our Dollars for Students Program
- ✓ Flexible Schedules
- ✓ Save on groceries with our 5% discount card
- ✓ Employee Stock Ownership Program
- ✓ Fitness Reimbursement & More!



Tuition Assistance!

What it takes:

- **Love of guest service:** Through exceptional guest service, we have the chance to changes guest's lives and make memories!
- **Ability to thrive in a fast-paced environment:** Time flies when you're having fun. Clock-watching is unnecessary when you're with family & friends!
 - **Speaking of family & friends-** ask us about our referral program 😊

Apply Online Today:

www.festfoods.com/careers

At Festival Foods we are committed to providing an environment of mutual respect where equal employment opportunities are available to all. We are dedicated to building a top-notch team of skilled, experienced and service-oriented associates who represent a variety of backgrounds, perspectives, and talents. Festival Foods believes that diversity and inclusion among our teammates, products, and our community strengthen our ability to serve our guests, as we seek to recruit, develop and retain the most talented people.



We're Hiring

At Goodwill Industries of North Central Wisconsin, our focus is people. Helping them. Serving them. Working alongside them. Caring for them. It's all about people.

And you're our kind of people.

Being part of our Goodwill family has its perks. We provide a work environment and culture for our team members that:

- Provides opportunities for professional and personal growth
- Supports and celebrates the uniqueness and accomplishments of our team members
- Offers benefits starting at 30 hours, including health and dental insurance, paid time off and a team member discount

The work we do is focused on advancing our mission of Elevating People by Eliminating Barriers to Employment. Discover the difference you can make for yourself and neighbors in your community.

Positions available at all Fox Valley, Oshkosh and Green Bay locations

Available positions include:

- **Full-time Production Support Specialist - \$10.50 per hour**
- **Part-time Production Support Specialist - \$10.50 per hour**
- **Full-time Customer Service Support Specialist - \$9.50 per hour**
- **Part-time Customer Service Support Specialist - \$9.50 per hour**
- **Job Coach - \$11 per hour**
- **Area Team Leader - \$14 per hour**

Apply online or search for other job opportunities at goodwillncwjobs.org.

We believe in equal employment opportunities for all team members and applicants for employment and will offer reasonable accommodation in the employment process for individuals with disabilities or other barriers to employment. As you go through our selection process, you may request an accommodation at any time. Please contact the leader at your local Goodwill location if you are in need of assistance.



GREAT EXPECTATIONS



NOW HIRING!

Working location: 3465 Moser St Oshkosh, WI 54901

Great Northern designs and manufactures innovative paperboard packaging for consumer products sold in stores and online. Our engineered packaging solutions combine custom strength and structural design features with high quality print, creating standout packaging that functions well throughout the supply chain and for the consumer.

Packaging Technicians

- Schedule: 12s 2-2-3 fixed day, 6am-6pm or 12s 2-2-3 fixed night, 6pm-6am
- Starting wage: \$17/hr with opportunities to grow!
- Paid Vacation, Health Fitness Reimbursement, Paid Holidays, Health, Dental, Vision

This position is responsible for packing product at the end of production equipment and ensuring product meets customer expectations. Great Northern Oshkosh also offers opportunity to learn and develop to assistant operator and operator positions with greater earning potential.

General Applicants

- Schedule: based on position applying for.
- Starting wage: based on position applying for, but a minimum of \$17/hour
- Paid Vacation, Tuition Reimbursement, Tools Provided, Health Fitness Reimbursement, Paid Holidays, Health, Dental, Vision

Please look at Great Northern's website for current openings. If you do not a position that best suits your skillset, please apply in the General Applications-Oshkosh position.

Working location: 395 Stroebe Rd., Appleton, WI 54914

For over 55 years, Great Northern has designed and manufactured corrugated packaging for commercial and consumer applications. Exceeding customer expectations has been our passion and tradition. We continually invest in high-capacity equipment to create efficiency and redundancy throughout our Midwest locations. Our commitment to technology, along with our Midwest work ethic to live out our mission to 'help our customers win by doing what others can't or won't', sets us apart from other packaging suppliers.

General Applicants

- Schedule: based on position applying for.
- Starting wage: based on position applying for, but a minimum of \$23.72/hour
- Paid Vacation, Tuition Reimbursement, Tools Provided, Health Fitness Reimbursement, Paid Holidays, Health, Dental, Vision

Please look at Great Northern's website for current openings. If you do not a position that best suits your skillset, please apply in the General Applications-Appleton position.

How to apply: www.greatnortherncorp.com

Great Northern is an equal opportunity at will employer and does not discriminate against any employee or applicant for employment because of age, race, religion, color, disability, sex, sexual orientation or national origin.

For further information not listed on our website please contact Lauren Basler HR Recruiter at 920-831-2317 or lbasler@greatnortherncorp.com



3010 E Venture Drive, Appleton, Wisconsin

EMPLOYEES ARE OUR GREATEST ASSET

Privately held, Great Northern is one of the nation's largest independent producers of corrugated packaging. For more than five decades, customers have turned to Great Northern Corporation for integrated, comprehensive packaging solutions in industrial, commercial and retail markets. Great Northern exists to live out the core values established by our founders - integrity, personal growth, entrepreneurial spirit, and a shared future.

Laminations, a division of Great Northern Corporation is a leading producer of edge protective packaging.

Our vision, "**We help our employees win through personal growth and a shared future**" is a call to action to deliver on building a people-centric culture, developing leaders from within, and sending people home fulfilled about their role and contributions. The "win" for everyone is a trusting and collaborative culture that helps us be at our best every day.

WHAT WE CAN OFFER YOU

Excellent wages starting at \$17.00/hour and up! Crew Leaders can start out at \$19.00/hour! We offer shift differential for 2nd and 3rd shift employees.

In addition to excellent wages, Great Northern has a competitive benefits package including medical, dental, and vision; life insurance; paid vacation; paid holidays; profit sharing and 401(k) with company match. We also offer our employees a safe, clean, friendly environment and room for growth!

POSITIONS AVAILABLE

3 rd Shift Crew leaders & members	Hours required for 3 rd shift are 9:55pm – 6am Sun-Thur.
2 nd shift Vboard Crew Member	Hours required for 2 nd shift are 1:55pm – 10pm M - F

Part-time Vboard Packer –shifts available:

6am – 10am	2pm – 6pm	10pm – 2am
10am – 2pm	6pm – 10pm	2am – 6am

If you are interested in becoming part of a successful and progressive company with well-maintained equipment that embraces Lean philosophies and has a culture of wellness, please send your resume to hrgs@greatnortherncorp.com or complete an online application for your desired position at www.greatnortherncorp.com/careers.

For more information on our company, please visit our website at www.greatnortherncorp.com

Great Northern is an equal opportunity at will employer and does not discriminate against any employee or applicant for employment because of age, race, religion, color, disability, sex, sexual orientation or national origin.



Gusmer Enterprises, Inc.

Gusmer Enterprises is a 24/7 specialty mill and injection molding facility

URGENTLY HIRING

JOB POSITIONS AVAILABLE

Entry Level Production

Entry Level Production employees will be responsible for die cutting, injecting moldings inspection, packaging, labeling, and palletizing of finished goods. These positions are currently operating in a swing shift rotation.

Pay starts out at \$18.65/hr and that's just on training alone!

Enjoy half the month off with our rotating 12-hour shift schedule that includes over time pay on Saturdays and double time pay on Sundays that are worked. Shift rotation also includes 2 weeks 6 AM - 6 PM, then 2 weeks 6 PM - 6 AM.

Equal access to programs, services and employment opportunities is available to all persons without regard to age, race, creed, color, disability, marital status, sex (including pregnancy), national origin, ancestry, sexual orientation, military service, genetic information, or any other basis protected by federal, state, and/or local law.

Benefits

Generous retirement with 401k match & profit sharing
Great medical, dental, & vision are offered
Benefits include paid vacation and holiday
Cash profit sharing bonus program

Qualifications

Basic mathematics and work with measuring instruments
Organized and able to work well under pressure
Self-motivated and work without direct supervision
High School Diploma or equivalent
Previous production experience a plus
Familiarity with safety procedures a plus

APPLY

Click here to
apply online or in person at
1401 Ware St Waupaca, WI.
Please contact Mary Grosskopf
mgrosskopf@gusmerenterprises.com with any
questions you may have regarding this position.



Heartland

LABEL PRINTERS

www.hrtlp.com

CURRENT MANUFACTURING OPENINGS- LITTLE CHUTE, WI

1st Shift 3:00am-3:00pm, Monday through Thursday

- Press Operator, Machine Maintenance Technician

2nd shift 3:00pm-3:00am Monday through Thursday

- Press Operators, Coating Machine Operator, Coating Machine Assistant, Machine Maintenance Technician, Material Handler

Weekend Shift 3:00am – 3:00pm, Friday through Sunday

- Press Operators, Die Cutter Operator, Material Handler

Weekend Shift 3:00pm – 3:00am, Friday through Sunday

- Press Operators, Die Cutter Operator, Material Handler

Little Chute Office Positions

- No Current Openings

BENEFITS HEARTLAND OFFERS

- Straight shifts (no rotating or swing)
- Paid Training
- 3-day weekends for 1st & 2nd shifts, 40 hours paid for 36 hours worked for Weekend Shifts
- Climate Controlled work environment
- 401 (k) Retirement Plan with company match
- Eligible for \$1000 attendance bonus after 1 year, End of year Bonus
- Health, Dental, and Vision Insurance with a company contribution to a Health Savings Account
- Life Insurance at 1x your annual income, Short & Long-Term Disability Insurance
- Paid Vacation and Holidays
- Onsite Fitness Centers
- Regular team building including cookouts, Holiday in the Plant, Open House

CORE VALUES

- Respect & Trust
- Innovation & Excellence
- Performance & Accountability
- Teamwork & People Development

To learn more about our company and view our other opportunities, visit www.hrtlp.com.
Resumes can be sent to: resumes@hrtlp.com | Recruiter phone: 920-687-4780
Heartland Business Systems is hiring for IT engineers and IT consultants. www.hbs.net

Heartland Label Printers is an Equal Opportunity Employer - Disabled/Vets.

JOIN OUR TEAM!

Apply online: <https://www.heidmusic.com/careers/>

EQUAL OPPORTUNITY EMPLOYER



NOW HIRING!

OPEN POSITIONS:

BENEFITS

Sales Associates:

Duties: Sales Associates/Music Enthusiasts are critical to Heid Music's success in creating and maintaining a "Bravo" customer service experience. This position builds and maintains relationships by assisting customers in the selection and purchase of Heid Music's musical merchandise. Music Enthusiasts also get involved in our many community and school events promoting music to people of all ages.

Locations:

- Appleton
- Madison
- Green Bay
- Oshkosh

- Health, Dental & Vision Insurance
- Life Insurance
- 401K
- Paid time off
- Employee discounts
- Fun working environment



ABOUT US



Heid Music's Mission:

To bring happiness & help improve the quality of life through music & music education.

To contribute & be responsible to the communities in which we serve.

To promote & support music education.

HEID MUSIC



Helping Hands
caregivers
Trust. Companionship. Versatility.

NOW HIRING

Flexible Schedule options! Will work around Daycare and School Schedules.

REQUIREMENTS:

- Valid Driver's License
- Reliable transportation and Car insurance
- At least 18yrs of Age
- 6 months of exp or PCW cert/CNA preferred
- Must be a U.S. citizen or have a valid work permit
- Pass a criminal and caregiver background check

EXPECTATIONS:

- Starting at \$11.00hr you will have quarterly reviews with wage increase opportunities.
- Preferred availability between 7am and 7pm
- Work a minimum of 10hrs a week and e/o weekend
- Provide basic ADLs (Bathing, Dressing, Grooming, and Toileting)
- Provide Supportive Cares (Light Housekeeping, Laundry, Grocery shopping and Meal prep)



At Helping Hands Caregivers we rely on each other to ensure our clients receive the highest level of care to keep them safe in their home.

Caregiving requires a special person, if you are looking for a career that will make a difference in the lives of others we want you on OUR team!

Benefits include Health, 401K, Short and Long Term Disability, Life, Dental, and Vision for Full Time Employees

We are an Equal Opportunity Employer

**FOR MORE INFORMATION, YOU CAN CALL TODAY 920-217-2961
APPLY: [HTTPS://HELPINGHANDSWI.CLEARCAREONLINE.COM/APPLY/](https://helpinghandswi.clearcareonline.com/apply/)**



JOIN OUR TEAM

WE HAVE THE VEHICLES
AND ARE SEEKING THE BEST!



WE ARE LOOKING FOR FULL-TIME
COLLISION TECHNICIANS
AUTOMOTIVE TECHNICIANS
QUICK LUBE TECHNICIANS
DETAIL TECHNICIANS

WHAT WE OFFER

- Generous paid time off (PTO)
- Excellent health/dental/vision insurance options
- Rewarding 401(k) with company contribution
- Appealing employee discounts
- Fun, team-orientated culture
- On-going training and education
- And much more

FOR MORE INFORMATION, PLEASE CONTACT TRACY PATROUILLE
TPATROUILLE@HOLIDAYAUTOMOTIVE.COM - 920-273-0395
321 N. ROLLING MEADOWS DR., FOND DU LAC WI 54937

Apply for a position at [holidayautomotive.com/careers](https://www.holidayautomotive.com/careers)



HOLTGER BROS., INC.

UTILITY CONTRACTOR Since 1946

Join our Growing Team!

***Aerial Ground Hand**

***Construction Laborer**

***Heavy Equipment Operator**

***Utility Foreman**

CDL (class A) is highly preferred for all positions

Competitive Pay & Excellent Benefits

On-the-job training & Year-round outdoor work



Holtger Bros., Inc. (HBI) is an equal opportunity employer.

Call **800-831-0754** Apply Online **www.Holtger.com**



INNOVATIVE SERVICES, INC.

In Every Person ... A Possibility

CAREER OPPORTUNITIES

How to apply

- Visit
- Click on Careers Tab
- Click on your desired position
- Click Apply Now
- Follow the easy steps to apply

Benefits

- Vacation/Holiday Pay
- Career Advancement
- Paid Trainings
- Insurance
- Retirement Plan
- Wellness Benefits

Contact us:

808E W Wisconsin Ave
Appleton, WI 54914

Ph: (920)-830-2995
Fax: (920)-257-4262

About Us

Innovative Services, Inc., a non-profit organization, supports developmentally disabled and/or adults and youth with mental health issues with aspects of daily life.

APPLY NOW!!



Job Overview

Job responsibilities are similar to that of a Certified Nursing Assistant (CNA) or caregiver. Prior experience desired but not necessary.

Positions available in the following areas:

- Appleton
- Kaukauna
- Chilton
- Oshkosh/Fond Du Lac
- Waupaca/New London area

EOE

ISI provides equal opportunity in all employment practices to all qualified employees and applicants without regard to race, color, religion, gender, arrest and conviction record except as may otherwise be required by applicable law, national origin, ancestry, age, disability, sexual orientation, marital status, military status or service, ancestry, pregnancy (includes childbirth, maternity leave, and medical conditions related to pregnancy and childbirth), genetic information or any other category protected by federal, state and local laws.

We think your future is bright.

NOW HIRING for our location at **945 Apple Blossom Drive in Neenah**

Multiple positions available on 1st and 2nd shift. No weekends.

1st Shift: 5:00am -1:30pm OR 2nd Shift: 12:00pm-8:30pm

Production Technician

Light Operators:

Our Light Operators are responsible for hanging, folding, and inspecting garments. Team members will count, sort, and package clean products in preparation for delivery to our customers. Pay is \$12.78 per hour (+ \$0.50 shift differential for 2nd shift).

Production Technician

Heavy Operators:

Our Heavy Operators unload trucks, sort, separate, and count received items. Team members will load, unload, and operate industrial-sized washers and dryers. Pay is \$14.00 per hour (+ \$0.50 shift differential for 2nd shift).

Benefits:

Competitive pay, 401(k), medical, dental and vision, paid time off, holidays, and career advancement opportunities.

Come join our team. Apply online at ITUAbsorbTech.com/careers.

We'll help you develop your career path.

Each employee has unique career aspirations. We work with you to create a pathway for success in the company.

1 Promote from within culture

We like to promote our own people. After all, they know our business best. **More than 40% of open positions are filled by promoting** our team members.

2 Tuition reimbursement

We offer an attractive tuition reimbursement program to advance your education and career within the company.

3 Move within our geographic footprint

We're growing at a rapid pace. We currently operate out of 11 locations throughout the U.S., and the number will grow. We have many opportunities for employees who may want to move to other locations.

Missy,
Production Supervisor
Neenah, WI

 **AbsorbTech**®

Family owned and operated since 1930



4.6 rating
on Glassdoor



POSITIONS AVAILABLE IN

FOX VALLEY OSHKOSH GREEN BAY

TRYING TO DECIDE ON A NEW JOB? TRY US ON FOR SIZE:

- FT and PT positions available
- Full benefits including health, dental, vision and 401(k)
- Excellent sign-on and referral bonus programs
- Select weekend shifts qualify for \$2/hr shift premium



SURE, WE CLEAN BUILDINGS...

\$11

per hour & up

...AND WE BELIEVE WE DO IT BETTER THAN ANYONE ELSE. WE WORK IN A VARIETY OF BUILDINGS FROM SCHOOLS TO OFFICES TO PAPER MILLS. WORK ALONE OR WITH A SMALL TEAM. WE'LL WORK WITH YOU TO FIND A JOB LOCATION THAT MATCHES YOUR SKILLS, INTEREST AND AVAILABILITY.



AND WE DO SO MUCH MORE!

\$12

per hour & up

LIKE CLEANING WINDOWS? WE HAVE ROUTES AVAILABLE WHERE YOU'LL DRIVE A COMPANY VEHICLE FROM ONE JOB TO THE NEXT MAKING EACH CUSTOMERS' GLASS SPARKLE! THESE ROUTES ARE MOSTLY "DURING SUNSHINE HOURS" AND IT'S A GREAT WAY TO SPEND TIME OUTSIDE!



LIGHT CONSTRUCTION LABOR...

\$13

per hour & up

WE HAVE AN ENTIRE SPECIALTY SERVICES DIVISION THAT TACKLES EVERYTHING FROM CONSTRUCTION CLEANUPS TO PAINTING, POWER WASHING, FLOOR CARE AND LIGHT MAINTENANCE. MINIMAL TRAVEL WITH EXCELLENT PAY AND BENEFITS. EVEN IF YOU DON'T HAVE EXPERIENCE, WE'RE LOOKING FOR THOSE WITH A DESIRE TO LEARN AND EARN!



AND EVEN HIGH-RISE PROJECTS!

\$14

per hour & up

LOOKING FOR SOMETHING REALLY UNIQUE? NOT AFRAID OF HEIGHTS? WANT QUICK ADVANCEMENT AND OUTSTANDING PAY WITH ANNUAL BONUS PACKAGE? ASK ABOUT OUR HIGH-RISE DIVISION. IT'S NOT SOMETHING MANY GET TO DO...PLUS WE PROVIDE ALL SAFETY TRAINING AND GEAR...

E-Verify

TO APPLY: JacksMaintenance.com OR TEXT "JACKS" TO 97211

QUESTIONS? Call Kassie in our HR department: 800-553-1855

Equal Opportunity/Affirmative Action Employer



JBS Green Bay is hiring

JBS has full time positions, great benefits and gives the opportunity to grow within the company

Production

All production positions starting at \$17.95 up to \$24.45

Maintenance

Industrial mechanics with experience up to \$30/hour and electricians up to \$32/hour

JBS is now offering a bus ride from Oshkosh and Appleton to the Green Bay plant

For more information visit us at www.jbssa.com

1330 Lime Kiln Rd, Green Bay, WI 54311 TEL: 920-406-2145

EOE/M/F/VET/DISABLED



Neenah Cold Spring Facility

Machine Operators Maintenance

- Mechanics
- Electricians



Rated as one of America's Best Large Employers by Forbes, Kimberly-Clark manufactures the finest quality products on high speed manufacturing equipment in a climate-controlled, clean environment where safety is a value.

We offer very competitive hourly rates, starting at \$20 per hour for operators or \$32.90 for mechanics/electricians, including premium pay on Sundays! For Maintenance Mechanics & Electricians, additional vacation will be awarded based on Journeyman experience aligned with our vacation schedule and relocation bonus for anyone relocating 50 miles or greater.

You **ONLY WORK 6 MONTHS OUT OF THE YEAR** with our rotating 12-hour shift schedule.

12-hour shifts (days/nights) 6 am – 6 pm; 6 pm – 6 am, every other weekend off!

How To Apply

Visit our careers site at <http://www.careersatkc.com>

Click "Search Jobs"

Search for jobs – **814391 (Machine Operator), 814392 (Electrician), 814395 (Maintenance Mechanic)**

Click the job link and follow steps to apply

For Kimberly-Clark to grow and prosper, we must be an inclusive organization that applies the diverse experiences and passions of its team members to brands that make life better for people all around the world. We actively seek to build a workforce that reflects the experiences of our consumers. When you bring your original thinking to Kimberly-Clark, you fuel the continued success of our enterprise. We are a committed equal opportunity employer, and all qualified applicants will receive consideration for employment without regard to race, color, religion, sex, national origin, disability status, protected veteran status, sexual orientation, gender identity, age, pregnancy, genetic information, citizenship status, or any other characteristic protected by law. The statements above are intended to describe the general nature and level of work performed by employees assigned to this classification. Statements are not intended to be construed as an exhaustive list of all duties, responsibilities and skills required for this position.

KOBUSSEN BUSES LTD.

**NOW HIRING!
APPLY ONLINE
TODAY!**

KOBUSSEN.COM

920-424-7575

**OSHKOSH-KAUKAUNA-MANAWA-
NEENAH-NEW LONDON-SEYMOUR**

OPEN POSITIONS:

**SCHOOL BUS DRIVERS
VAN DRIVERS/BUS AIDES
CHARTER DRIVERS
MECHANICS**

KOBUSSEN BUSES LTD IS EQUAL OPPORTUNITY EMPLOYER

KOBUSSEN BUSES LTD IS FOLLOWING ALL RECOMMENDED COVID-19 PRECAUTIONS



**YOU
BELONG
HERE**

Join the Lakeland Care family!

Lakeland Care offers care management services to help eligible elders and adults with disabilities live independently. We are recruiting dedicated individuals who want to make a difference in the lives of the people we serve! Now accepting applications for Care Managers and Registered Nurse Care Managers throughout Northeast and North Central Wisconsin. Check our website regularly for opportunities that may be available in other departments.

We offer employees a successful work life harmony!

- Paid Holidays
- Floating Holidays
- Paid Time Off
- Flexible Work Arrangements
- Telework Opportunities
- Alternative Work Schedule
- Volunteer Time Off
- Lend a Helping Hand (Employee PTO Donation Program)
- Great Benefits

***Have questions? Contact Samm Pamperin at: 920-906-5855 or
Samm.Pamperin@lakelandcareinc.com***

***Check out our openings and apply online at:
www.lakelandcareinc.com/join-our-team***

We are an equal employment opportunity employer functioning under an Affirmative Action Plan. All qualified applicants will receive consideration for employment without regard to race, color, religion, gender, national origin, disability status, protected veteran status or any other characteristic protected by law.



LAKELAND CARE

Local. Compassionate. Dependable.

LAND O' LAKES, INC.

927 – 8th Street * Kiel, WI * 920-797-5115

NOW HIRING

Land O'Lakes, Inc. in Kiel, Wisconsin a Dairy Foods manufacturing facility creating dairy products in 40# blocks and 640# blocks of natural cheddar cheese as well as food grade whey powder that stand for real, simple goodness. We believe there's power in every drop of milk our farmers produce, and by improving production and finding innovative uses for that milk, we add a little good to people's lives. We offer competitive wages, including night shift and Sunday premiums; and excellent benefits (medical/dental/vision insurance, education assistance, employee discounts, etc.) in a union-based work environment.

Maintenance Technicians – All Shifts

The **Maintenance Technician** will perform tasks intended for maximizing asset reliability, availability, and maximum efficiency. Primary objectives shall be to perform tasks safely, while following all company and plant rules and policies to ensure the work environment is safe for all employees as well as clean and compliant equipment and systems for safe and wholesome production of all products. The **Maintenance Technician** is responsible for monitoring, troubleshooting, repairing and maintaining plant processing, facility and support equipment. Hourly rate starts at \$24.46 plus night shift & Sunday premiums; ability to advance based on proven skill set.

Controls Technician – 2nd Shift

The **Controls Technician** will perform tasks intended for maximizing asset reliability, availability, and maximum efficiency. Primary objectives shall be to perform tasks safely, while following all company and plant rules and policies to ensure the work environment is safe for all employees as well as clean and compliant equipment and systems for safe and wholesome production of all products. The electrical **Controls Technician** will be responsible for troubleshooting, repair, testing, maintaining, calibrating and proper operation of all instrumentation, control systems, electrical support systems and equipment at the facility. Hourly rate is \$31.42 plus night shift & Sunday premiums; ability to advance based on proven skill set.

Production Operators – 2nd Shift & 3rd Shift

The **Production Operator** is the front-line employee who performs the manufacturing processes relative to 40# blocks and 640# blocks of natural cheddar cheese that add value and quality to the inputs and create the final high-quality final products. There are a variety of sub-classifications within the **Production Operator** job family that have range in specific duties from receiving and handling the raw materials, adding value through a variety of proprietary processes, to packaging the final product. In all stages of production safety, attention to detail, a quality and sanitation focus, and efficiency are key to the success of the operation. Hourly rate is \$21.67 plus night shift & Sunday premiums.

Land O'Lakes, Inc. is an Equal Opportunity and Affirmative Action Employer. Land O'Lakes enforces a policy of maintaining a drug-free workforce, including pre-employment substance abuse testing.

Apply at www.landolakesinc.jobs

NOW HIRING



Lowe's stores in Appleton, Manitowoc, and Oshkosh have immediate openings in many departments, including for cashiers, retail associates, stocking & receiving, delivery drivers, sales associates, and more.

Visit jobs.lowes.com to explore and apply for available jobs near you.

WHERE IS LOWE'S HIRING NEAR YOU?

Lowe's of Appleton

Store #2486
W3255 Van Roy Road
Appleton, WI 54915

Lowe's of Manitowoc

Store #2206
4401 Crawford Boulevard
Manitowoc, WI 54220

Lowe's of Oshkosh

Store #2308
1075 North Washburn Street
Oshkosh, WI 54904



jobs.lowes.com

Lowe's is an equal opportunity employer committed to diversity and inclusion.

© 2020 Lowe's. All rights reserved. Lowe's and the gable design are registered trademarks of LF, LLC.

Join Our Team!



LSC
Communications

www.lsc.com/careers

We're here to help you apply, call us!



Menasha [920-486-2400](tel:920-486-2400)

The Midway plant is a full-service 4 color facility that prints soft cover catalogs and books in multiple binding styles.

Open Positions at Menasha Midway:

Entry level rotating shifts—Bindery & Press Room

- ⇒ **Bindery**—you will receive a rate increase within your first 6 months to over \$16/hr. Multiple promotional opportunities to make upwards of \$19 /hr.
- ⇒ **Press**—you will receive a rate increase within your first 6 months to over \$17/hr. Within one year working with us you will receive another rate increase to over \$18/hr.



Appleton [920-903-5800](tel:920-903-5800)

The Fulfillment Services facility provides publishers with pick and pack product distribution.

**Shift differentials for 2nd & 3rd shift
Hourly progressions after 3 months**

Open Positions at Appleton Lake Park Rd:

- ⇒ **2nd shift Forklift Operator 1** \$14.82
- ⇒ **2nd & 3rd shift Forklift Hoist Operator 2** \$16.38
- ⇒ **3rd shift Assembly Lead** \$16.38

Open Positions at Menasha Brighton Beach Rd:

- ⇒ **1st shift Forklift Hoist Operator 2** \$16.38
- ⇒ **2nd shift Order Filler** \$13.36

LSC Communications is a AA & EEO

MAXCESS®



TIDLAND

MAGPOWR

WEBEX



Maxcess helps our customers maximize productivity through innovative products and services worldwide. With over 400 years of global service and support across the storied product brands of RotoMetrics, Fife, Tidland, MAGPOWR, Webex, Valley Roller, Menges Roller, and Componex, Maxcess offers an unrivaled network of application experts and end-to-end web handling solutions to help our customers work better, faster and smarter.

**Machinists...Welders...Roll
Builders..Grinder/Groovers..
Core Prep Specialists**

We are looking for individuals to join our team to continue our path to Operational Excellence:

- ✓ Do you thrive in a fast-paced environment?
- ✓ Are you the kind of person who works hard to deliver world-class customer service?
- ✓ Are you committed to continuous learning in order to stay at the top of your profession?

Our Company Mission is to be the leader in maximizing our customers' productivity with innovative web handling products and services worldwide.

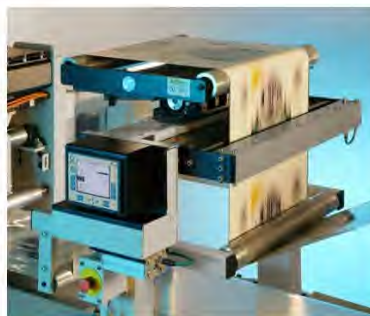
We achieve our mission by asking our customers what they need, listening to them and delivering above their expectations.

Safety is a core value and part of our culture: We are committed to be compliant with all regulatory requirements and safety rules, and strive for injury-free workplaces. We believe every employee is entitled to a safe and healthy place to work.

Maxcess is an equal opportunity employer.

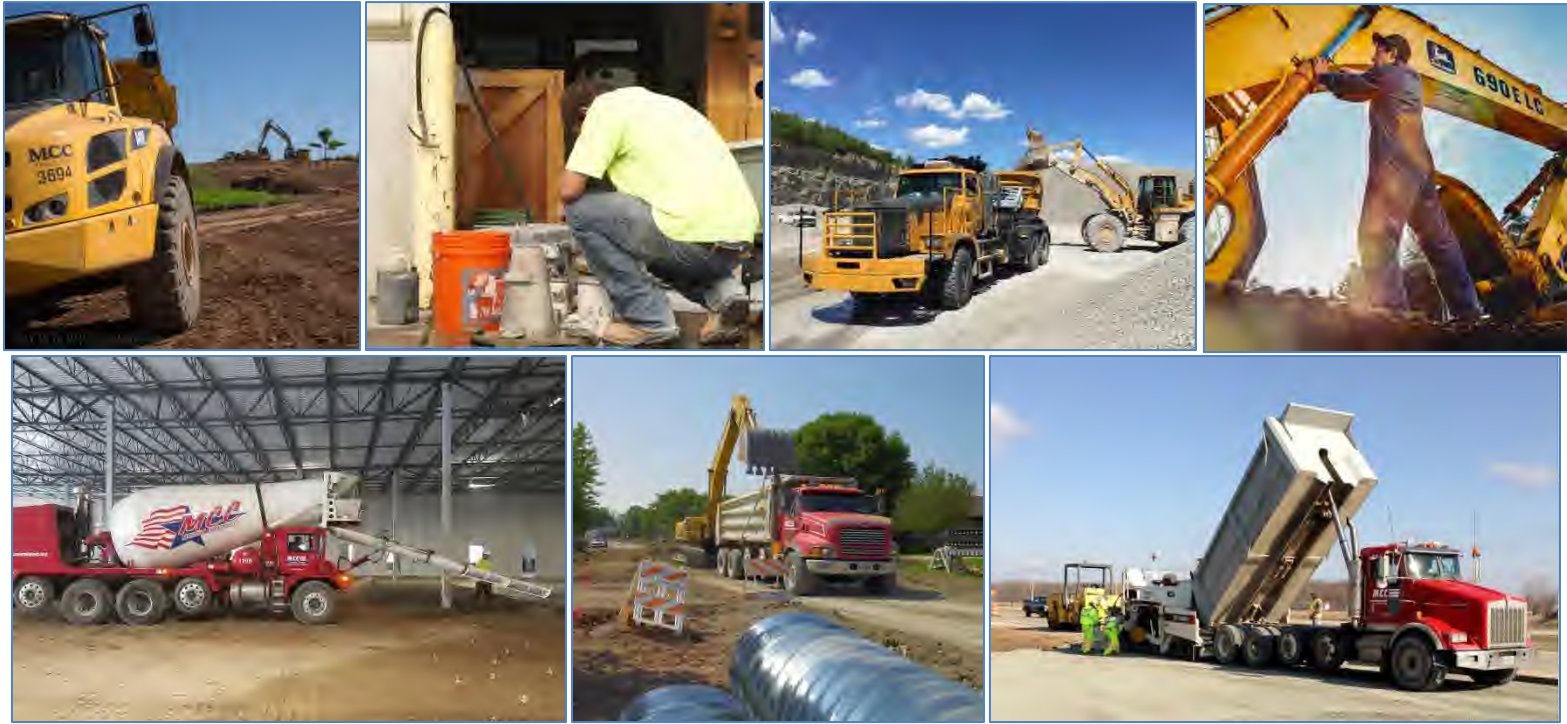
For additional information, contact:

**Nancy Bongert
Human Resource Manager
nbongert@maxcessintl.com
920.215.7394**





NOW HIRING!



Founded in 1926, MCC, Inc. is a third generation family owned company that has been in business for over 94 years! Today, our family has grown to nearly 400 employees who specialize in serving the Aggregate, Asphalt, Construction, & Ready Mix Concrete industry with quality products & customer service! MCC, Inc. is also proud to share that we are one of Outagamie County's largest recyclers, as we reuse shingles, thousands of tons of concrete and asphalt from road surfaces; reintegrating the recycled products back into material for our projects! So, how can you join our Family? MCC, Inc. is currently hiring:

- Class A CDL Drivers for Bulker and Semi-Trailer Operators
- Class B CDL Drivers for Redi-Mix Concrete and Dump Truck Operators
- Asphalt Paving Equipment and Asphalt Plant Operators
- Heavy Equipment and Loader Operators
- Heavy Equipment and Rolling Stock Mechanics
- Plant Maintenance Mechanics
- Quality Control Technicians
- Electricians



Not only does MCC, Inc. offer rewarding careers, we also have a full benefits package including:

Competitive wages, Health, Dental, Vision, Life, Disability, Accident, Critical Illness, Hospital Confinement, & Cancer Insurance. We also offer a 401K & match, Roth 401K, Flex spending/Health Savings Accounts, Employee Assistance Programs, Paid Holidays, Personal Time Off, and much more!

Worried about travel and being away from your family? No problem, we'll get you home every night!

With locations throughout Northeast, WI & the Fox Cities including, but not limited to: Oshkosh, Fond Du Lac, New London, Brillion, Elkhart Lake, Humboldt, Bonduel, Green Bay, Mackville, we are sure to have a location near you!

For more information contact us at 920-749-3360

Visit our website at www.mcc-inc.org or like us on [Facebook!](#)

MCC, INC. IS AN EQUAL OPPORTUNITY EMPLOYER



Why Join Us?

We make fun products!

- Jalapeño Poppers
 - Mozzarella Sticks
 - Cheese Curds
 - Mac and Cheese Bites
- ... you can enjoy our products at Sonic, Arby's, Burger King, White Castle etc.

fun fact



All positions are full time and include benefits!

Medical/Dental/STD/LTD/Holidays/PTO/
Boots/Rx Eyeglasses/Tuition
Reimbursement/etc.

We provide PPE!

Appleton is home of the Popper!

On April 30, 1992, Anchor Food Products (now McCain Foods) applied for and later received a trademark on "Jalapeño Poppers"

Apply today by:

- Visit our Website at www.mccain.com. Search Careers for opportunities at our plant in Appleton, WI.
- We are hiring for positions in Production, Warehouse, Leadership and more.
- Need assistance? Call us at **(920) 997-2537** to speak to a recruiter.

McCain Foods is an equal opportunity employer and does not discriminate on the basis of any legally protected status or characteristic (Minority/Female/Sexual Orientation/Gender Identity/Disability/Veteran).

Menasha Packaging, Promotional Print Solutions (PPS) has several openings for manufacturing positions.

We are located at 2255 Brooks Avenue, Neenah, WI

To apply, click here: <https://menasha.socialsourcingnetwork.com>

(Search for Neenah, WI)

If you have any questions, contact our local HR team.

Maggie.Miller@menasha.com

920-751-1804

Michelle.Zimmer-Maertz@menasha.com

920-751-1442

- **General Labor 2nd Shift** *Starting At \$16/Hr*
- **Folder Gluer Helper** *Starting At \$16/Hr*
- **Press Floating Feeder** *Starting At \$17/Hr*
- **Flexo Press Helper** *Starting At \$17/Hr*
- **Sheeter Backup Operator** *Starting At \$18/Hr*
- **Shipping Material Handler** *Starting At \$18/Hr*
- **Folder Gluer Feeder** *Starting At \$18/Hr*

Menasha Packaging offers a competitive benefits package as well. Company-match 401K, profit sharing, paid vacation and holidays, tuition reimbursement, referral bonuses, and more!

Equal Employment Opportunity (EEO) The policy of the company prohibits any employment practice which in any way discriminates or tends to discriminate against any person, employee, or applicant for employment with respect to compensation, terms, conditions or privileges of employment because of an individual's race, color, religion, national origin, sex, age, physical or mental disability or veteran status, as provided by federal, state and/or local law.

In the implementation of these policies, the company has developed an ongoing effort and program of steps to ensure that all employment and promotion decisions will be predicated upon the principle of equal employment opportunity. Specifically, all personnel actions such as recruitment, hiring, training, promotions, transfers, layoffs and return from layoffs, compensation, benefits and company-sponsored programs have been and continue to be made on a nondiscriminatory basis, provided the individual is qualified to perform the work available.

The company will also voluntarily undertake efforts to employ and advance in employment qualified disabled persons, disabled veterans and veterans of the Vietnam era. Any employee or applicant for employment, who is qualified under the applicable regulations, will be considered under our efforts if we are aware of their desire to be covered.

If you have any questions, comments or complaints regarding the company's equal employment and/or employment policies please contact Human Resources.



Mercury Marine Career Opportunities

The events of the past year haven't slowed Mercury Marine down! Boating is as popular as ever, and Mercury is going strong. Do you have manufacturing experience? Consider a change to Mercury. With entry level pay wages starting at \$20/hr. and more with regularly scheduled raises, we have the right job for you! Whether in warehouse, assembly, die-casting, machining, paint line or other skilled trades, you can be a part of our winning team.



Openings Include: 2nd and 3rd shift Openings

- ❖ Assembly Line - **\$20.02/hr.**
- ❖ Die Cast & Metal Finishing - **\$21.72/hr.**
- ❖ Machining - **\$20.92/hr.**
- ❖ Material Handling - **\$19.85/hr.**
- ❖ Paint Line - **\$19.61/hr.**

Benefits Include:

- ❖ Medical, Dental, and Vision Insurance
- ❖ Paid Vacation
- ❖ Paid Holidays
- ❖ 401k
- ❖ Tuition Reimbursement

All interested candidates should apply online at www.Brunswick.com/careers to the following:

JR-025345 – Assembly/Paint/Materials

JR-024614 – Machinists Technician

JR-023947 – Trim/Grind/Die Cast

For more information please contact Steve Zurawski at 920-929-5799 or email steve.zurawski@mercmarine.com. Candidates must be at least 18 years old to be considered. A pre-employment physical, drug screen, and background check are required upon offer of employment.

Equal Opportunity Employer: Minorities/Women/Protected Veterans/Disabled



SUMMARY OF BENEFITS

- Free Medical Insurance High Deductible Plan
- Dental Insurance
- Vision Insurance
- Free Short-Term Disability Insurance
- Free Group Life Insurance
- Supplemental Insurance
- 401(k) Plan With Match
- Health Savings Accounts
- Flexible Spending Accounts
- Educational Assistance
- Free Employee Assistance Program (EAP)

Opportunities

- Machine Operation
- Maintenance Technicians
- Robot Technician
- Powder Coat Painter
- Assembly
- Sort Table
- Laser Operation
- Manual & Robotic Welding

Apply at muzametal.com

Or call 920-230-4113

OUR VALUES HONESTY // FAIRNESS // PASSION // FUN
// CUSTOMER-FOCUS // TEAMWORK



EQUAL EMPLOYMENT OPPORTUNITY: It is the policy of Muza Metal Products to provide equal employment opportunity (EEOC) to all employees and applicants for employment regardless of their race, creed, color, religion, sex, age, marital status, ancestry, arrest or conviction record, sexual orientation, national origin, disability, veteran status, membership in the National Guard, State Defense Force or any other reserve component of the military forces of the United States or this state, or other area of prohibited discrimination. The company believes in and practices equal employment and all employees are responsible for supporting the concept of equal opportunity and assisting in meeting this goal.

NOW HIRING!!

- General Labor
- Metal Finishers
- Melt Department
- Casting Processing

Watch our videos on YouTube

2121 BROOKS AVE., NEENAH

Apply Today!

www.nfco.com/careers

General Information

920-729-3844

Hablomas Espanol

920-729-3669



IRON CLAD COMMITMENT

NEW EMPLOYEES WHO COMPLETE
6 MONTHS OF EMPLOYMENT

WILL RECEIVE
\$2,000*

**2ND &
3RD SHIFT
OPENINGS**

- Earn up to \$16/hr
starting wage

- + \$.70/HR FOR 2ND SHIFT
- + \$.80/HR FOR 3RD SHIFT

- Overtime opportunities



BENEFITS

PAID TRAINING

PAID VACATIONS

11 PAID HOLIDAYS

401 (K) SAVINGS PROGRAM
WITH COMPANY MATCH

MEDICAL & DENTAL INSURANCE

AND MORE

**AWARD WINNING IRON CASTINGS
KNOWN AROUND THE WORLD
THAT STAND THE TEST OF TIME**

* TERMS & CONDITIONS APPLY

Equal Opportunity Employer of Minorities, Females,
Protected Veterans, and Individuals with Disabilities.

Nestlé®

IS HIRING

apply @ nestlejobs.com



Competitive Pay
On-Site Store Discounts
Bonuses • Paid Holidays
Comprehensive Insurance

PRODUCTION WORKERS MACHINE OPERATORS • MAINTENANCE

The Nestlé Companies are equal opportunity and affirmative action employers and are looking for diversity in qualified candidates for employment: Minority / Female / Disabled / Protected Veteran.

Ornua Ingredients North America is based in Hilbert, WI, with a second production facility in Byron, MN. Our business is a leader in cheese innovation and one of the largest tailored ingredient cheese solution companies in the United States. We offer a fantastic environment and space for creativity and leading edge thinking in our sector.

**JOIN THE ORNUA
TEAM TODAY!**

Current Openings:

- **1st Shift General Production**
 - Start/end time between 5:30am- 4:30pm Monday-Thursday, Fridays mandatory as needed; starting pay is \$15.50 per hour.
- **1st Shift Packaging Stacker**
 - 6:30am- 4:30pm Monday- Thursday, Fridays mandatory as needed; starting pay is \$16.00 per hour.
- **3rd Shift Production**
 - 9pm- 6:30am Sunday through Wednesday, Thursdays mandatory as needed; starting pay is \$17.83 per hour (\$15.50 base + 15% Shift Premium).

\$1,000 SIGN ON BONUS NOW THROUGH FEBRUARY 26, 2021

**INTERESTED IN JOINING THE ORNUA
TEAM?**

View all current openings and apply online at:

www.ornua.com/careers

or www.indeed.com

Any questions please contact Brittney- HR Coordinator

Email: brittney.kostechka@ornua.com

Ornua is an equal opportunity employer; all applicants will be considered for employment without attention to race, color, religion, sex, sexual orientation, gender identity, national origin, veteran, or disability status.

Health & Wellness, Lifestyle & Culture Perks

Medical, Dental & Vision Insurance

-Eligible date of hire



Group Life/ AD&D Insurance

-Company paid at 100% (1.5x base salary)

Short Term Disability

-Company paid at 100% up to 26 weeks

Long Term Disability

-Company paid at 100%



401(k)

-Company match is 4%

-100% Vested immediately!

Paid Paternity and Maternity Leave

-2 Weeks paid paternal

-12 Weeks paid maternity



Quarterly Bonus Program

Paid Time Off + Paid Holidays (9 total)

No Weekends

Employee Training & Education Opportunities



Health & Wellness Program

Employee Assistance Program

Travel Assistance Program



Global Company

\$1,000 Sign on Bonus (limited time)!



**Oshkosh
Coil
Spring, Inc.**

- Are you looking for more than just a paycheck?
- Are you looking for a Career, we'll train you?
- Join the **OCS FAMILY** and **SPRING** into a highly rewarding career with Excellent growth potential!!

FULL BENEFITS PACKAGE

- *9 Paid Holidays, Including the Friday after Thanksgiving, Christmas Eve & New Year's Eve!!*
- *Paid Vacation*
- *3RD Shift – (10PM – 7AM) Full Time Steady hours, no rotating shifts, overtime available!!*
- *401K w/company Match & Profit Sharing*
- *Health, Dental, Vision, Life, supplemental life, STD / LTD & MORE!!*
- *\$14 Starting Wage, \$1,000 Retention Bonus & Substantial Referral Bonuses!!*

WHY OSHKOSH COIL SPRING?



Oshkosh Coil Spring is a manufacturer of quality compression springs, extension springs, torsion springs and wire forms. Oshkosh Coil Spring was founded in 1959 by Dennis Trembly in a small garage in Oshkosh, Wisconsin. In July of 1998 Wayne and Jeff Trembly purchased the company from their father and have continued the growth and success of the company. With a plant expansion of 80,000 square feet and additions of high speed coiling equipment, Oshkosh Coil Spring continues to produce springs for their customers in a faster and more efficient way than the competition. Over the years, our capabilities have continued to expand to make us a leader in the spring manufacturing market in the Mid-West and beyond!! Built on a solid foundation of Quality, Family and promoting from within, Oshkosh Coil Spring, Inc. is an awesome place to be.

**So if you're ready to begin your new Career, the only place to be is HERE!!
Come and join our Winning Team!!**

Apply at: www.oshkoshcoilspring.com

Oshkosh Coil Spring, Inc. is an Equal Opportunity Employer and does not discriminate in employment opportunities or practices on the basis of race, color, religion, sex, national origin, age, disability, sexual orientation or any other characteristic protected by law. We are also committed to provide equal employment opportunities to all qualified individuals and have an established affirmative action program in place to promote opportunities for individuals in certain protected classes throughout the organization.

OSHKOSH

Door Company

Right product. Right place. Right time.

Since 1853, Oshkosh Door—built from the legacy of Paine Lumber—continues to persevere. Today, we seek to hire talent, train extensively and have a people-centered culture filled with Wisconsin pride that gets the job done and done right every time.

Our plant is located at 2501 Universal Street in **Oshkosh, WI**. Our openings are physical jobs requiring you to be on your feet for 10-hour shifts with some heavy lifting. Work hours are Monday - Friday 5 am - 3 pm and a Saturday once or twice a month from 5 am - 1 pm. Starting wage of \$14/ hr. High School Diploma or GED required. Learn more: oshkoshdoor.com/careers/

Why You Want to Work Here:

- Friendly, respectful, and safe work environment
- Weekly pay
- Health, dental, and vision insurance
- Short and long-term disability insurance
- Life insurance
- 401(k) retirement plan with match
- Paid holidays
- Paid vacation
- Tuition reimbursement
- Perfect attendance program

Current openings:

- CNC Machine Operator
- Finishing Operator
- Wood Door Assembly
- Wood Door Assembly Floater



Join our team today!

To apply, email your resume to kmeszaros@oshkoshdoor.com

EQUAL EMPLOYMENT STATEMENT: Oshkosh Door Company is committed to the principles of equal employment opportunity and to making employment decisions based on merit. We are committed to complying with all federal, state and local laws, providing equal employment opportunities. It is the policy of the Company that all persons, regardless of race, color, age, sex, sexual preference, religious creed, national origin, citizenship status, military service or veteran status, marital status, disability or any other basis protected by law, will be judged solely on their qualifications in employment matters, including but not limited to recruitment, hiring, promotion, transfer, training, compensation and termination, and all other terms and conditions of employment.

Help us build a better world!

PLEXUS

Immediate Openings for Production Associates

\$13/hr at 90 days (\$12.50/hr at hire)
Shift Differential: \$1.30/hr

- Monday-Friday: 5:45AM-1:45PM
- Monday-Friday: 1:45PM-9:45PM
- Sunday-Thursday: 9:45PM-5:45AM
- Tuesday-Friday: 5:00AM-3:00PM
- Monday-Thursday: 3:30PM-1:30AM

Overtime as required for all shifts

Hiring new employees every Monday
Apply today



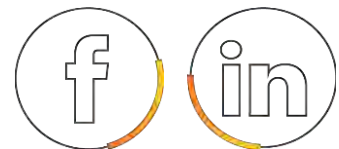
2444 Schultz Drive - Neenah



During this fight against COVID-19 we promise to keep you safe through the following precautions; virtual interviews, not having shifts overlap, outsourcing for additional intensive cleaning processes, conducting temperature screening at the beginning of every shift and requiring all employees to wear masks.

With a career at Plexus, you can expect:

- *Clean, bright, and temperature controlled manufacturing facility*
- *Exposure to new technology and a variety of fascinating products*
- *Eligible for benefits and PTO (if applicable)*
- *Weekly paycheck*
- *Tuition reimbursement*
- *Advancement and growth opportunities*



Check us out online

and apply at

www.plexus.com/careers.

Plexus Corp. is an Equal Opportunity and Affirmative Action Employer.



NOW HIRING
FULL TIME
ASSEMBLERS - \$15/hr. M-F

OSHKOSH LOCATION

Apply at: azz.com/careers

Recruiting for 1st Shift Positions

Pick your start time! 5:00 am or 7:00 am

Join an industry leader and take your career to the next level.

AZZ Switchgear Systems offers a complete line of custom designed switchgear products for utility distribution substations and generating stations, industrial and commercial facilities.

At AZZ, you'll enjoy competitive compensation, benefits and the chance to make a lasting impact on our industry.

Benefits include:

- Medical, Dental and Vision
- 401 (k) Matching Program
- Employee Stock Purchase Plan
- Tuition Reimbursement
- Training and Career Development
- Advancement and Promotion Tracks
- Employee Recognition Program
- Available 24/7 Workplace Chaplains

Contact us today to learn more about joining our team. We invite you to learn more about our company and confidentially discuss available employment opportunities by contacting: Human Resources 920.230.1622 or psihr@azz.com. View available positions and apply online at azz-inc.jobs.net or scan the QR Code.



Powergrid Solutions (Business unit of AZZ) – 3110 Progress Dr. Oshkosh, WI 54901

AZZ Inc. is an Equal Opportunity Employer. All qualified candidates will receive full and fair consideration for employment. All Applicants and employees are protected from unlawful discrimination and harassment on the basis of race, color, religion, national origin, sex, age, sexual orientation, gender, gender identity, marital status, citizenship status, veteran status, disability or any other category protected by applicable law.

WE'RE HIRING

Productive Living Systems is a leader in innovative community based rehabilitation services for adults with mental illness/developmental disabilities throughout the State of Wisconsin.

Our mission is to empower people to unleash their unlimited potential by providing a safe supportive environment where they can take charge of their lives, learn new more productive behaviors, pursue their dreams and live healthier, happier, more independent lives.

We are hiring for **Activity Aides** in our group homes and group home alternative programs in Oshkosh, Neenah, Appleton & Green Bay!

THE PLS DIFFERENCE!

Productive Living Systems prides itself in being an employee-owned company that has much more to offer than the average job.

So what makes working for PLS so special?

Get paid to participate in fun outings with clients, learn different meals & eat while on shift, & opportunities to go to the gym!

Building connections with clients & staff!

Flexible Scheduling!

ESOP!

You are not just a number!

You get the opportunity to make a difference everyday!

Wear jeans to work!

Learn life skills, such as:

- Communication
- Crisis Management
- Prioritizing
- Delegation
- Conflict Resolution

BECOME A PLS OWNER!

An Employee Stock Ownership Plan (ESOP) is similar to a retirement plan, but much better!

Productive Living Systems is an employee-owned organization that specializes in helping clients reach their unlimited potential. All of our employees are owners in our organization, which means as you give more to the clients and PLS, PLS is able to give more to you!



The average company matches 4% in a 401K.

The average ESOP contributes 7% to an employee's retirement fund.

PLS contributes over 17%!

Apply on our website at www.plsjobs.net/apply

Questions? Give us a call at (920) 738-5393



PLS is an equal opportunity employer



NOW HIRING

LPN VISIT NURSE

RN CASE MANAGER

CERTIFIED NURSING ASSISTANT

IN APPLETON
GREEN BAY
FON DU LAC
NEW LONDON
RIPON
SHAWANO
STEVENS POINT
WAUPACA

www.recoverhealth.org/careers

Recover Health is proud to be an Equal Employment Opportunity, Affirmative Action and Veterans employer.



Want to make more money?

Schneider's new pay increase will help you do just that.



At Schneider, we know how important it is to continually review and adjust pay to reward the work you do every day.

This latest pay increase is in addition to many significant improvements made in 2020 that puts more money in your pocket and improves your work experience:

- Added six paid holidays per year.
- Provided 13 weeks of additional performance pay – \$2.3 million – to recognize extraordinary work during unusual times.
- Adjusted truck speed from 63 to 65 MPH.
- Implemented Weekly Guarantee Pay program for inexperienced drivers.
- Upgraded driver pay with increases of nearly \$13 million encompassed in investments across the company.
- Built a new operating center in Dallas and invested millions of dollars in facility updates across the network.
- Made record level investments in new and upgraded equipment with a shortened trade cycle.

If you are interested in working for a company that respects and rewards safe, professional work, give us a call!



Let's connect:

Meet your knowledgeable local recruiter, who will get to know you and your career goals.

Meet your recruiter:

Nicole Wiskow
920-370-9941
wiskown@schneider.com

Submit your profile:

sni.jobs/nicole



Isn't it time to give yourself a better future?

Apply: schneiderjobs.com

AmericanJobCenter® An equal opportunity Employer/Service Provider. Auxiliary Aids and services are available upon request to individuals with disabilities. If you need this printed material interpreted to a language you understand or in a different format, or need assistance in using this service, please contact us: 608.258.9966. Deaf, hearing or speech impaired callers may reach us by the Wisconsin Relay number 711.



Transforming
tomorrow.

NOW HIRING

POSITIONS

COIL WINDERS:

- Pay: Starting at \$14.43/hr. w/wage rate progressions at 31 days, 6 months, 12 months & 18 months

WORK CELL ASSEMBLERS:

- Pay: Starting at \$14.09/hr. w/wage rate progressions at 31 days, 6 months & 12 months

ELECTRICAL TESTER:

- Pay: Starting at \$14.78/hr. w/wage rate progressions at 31 days, 6 months, 12 months & 18 months

QUALITY TECHNICIAN:

- Pay: Hourly, Based on Experience

WORK SITE: 101 WEST WAUKAU AVE, OSHKOSH, WI 54902

DURATION/USUAL HOURS PER WEEK: FULL-TIME, 40 HRS/WK. MIN.

SHIFT/WORK DAYS: FIRST SHIFT. MONDAY-FRIDAY. 6:30 AM TO 3:00 PM

BENEFITS

- *Health Insurance w/ Health Reimbursement Arrangement Plan*
- *Dental Insurance*
- *Life Insurance*
- *Short and Long Term Disability Insurance*
- *Paid Time Off*
- *401K Retirement Savings Plan*
- *Flexible Spending Accounts*
- *Tuition Reimbursement Assistance*

APPLY NOW

<https://www.sncmfg.com/employment>

CONTACT DETAILS:MMOUA@SNCFMFG.COM

920-231-7370 EXT3216

Equal Opportunity/Affirmative Action Employer: Minorities/Women/Protected Veterans/Disabled



*Careers in the landscape industry are **GROWING!***

Positions Available

Landscape Construction Foreman
Landscape Construction Technician
Landscape Maintenance Crew Lead
Landscape Maintenance Technician
Lawn Mowing Foreman
Lawn Mowing Technician
Seasonal Green Lake Retail

Contact: emilywarner@stuartslandscaping.com



Benefits:

Health Insurance
Dental Insurance
Vision Insurance
401k with Company Match
Flex Spending

Paid Vacation
Cell Phone Reimbursement
Clothing Allowance
Boot Reimbursement Program



Be a contributor to the **growth** and **success** of Stuart's Landscaping & Garden Center!
Established in 1986, Stuart's serves the entire Fond Du Lac, Green Lake, and Fox Valley area, and we are looking to grow our team. We are looking for individuals who enjoy working **outside**, having a **flexible** work schedule, and want to work for a **Family-focused, team-oriented** company!

At Stuart's Landscaping & Garden Center we believe that hard work should come with a reward. We continually strive to provide the best possible benefit package for our employees.



STUARTS LANDSCAPING & GARDEN CENTER INC. is an equal opportunity employer

NOW HIRING!



Sandwich Artists Management

**Jump-start your career today at a Subway®
restaurant!**

**Competitive Wages
Paid Training
Flexible Schedules
Advancement Opportunities**

Join our team

Apply online @www.mysubwaycareer.com, text the word "Subhire" to 242424, or e-mail a copy of your current resume to general@subrock.us.

Subway - Fox River Mall
4301 W Wisconsin Ave
Appleton, WI
Store #: 41475

Subway - Walmart
3701 E Calumet St
Appleton, WI
Store #: 36676

Subway - Hortonville
349 E Main St
Hortonville, WI
Store #: 20357

Subway - Appleton
4055 E Calumet St
Appleton, WI
Store #: 22158

Subway - Appleton
N115 State Park Rd
Appleton, WI
Store #: 7126

It has been and continues to be our policy to treat all employees and all applicants for employment fairly and without regard to race, color, religion, sex, age or national origin; to recruit, hire train and promote persons in all job classifications without regard to race, color, religion or sex; to base decisions on employment to further the principal of Equal Employment Opportunity; to insure that promotion decisions are in accord with the principals of E.E.O.; by imposing only valid requirements for promotional opportunities; and to insure that all actions regarding personnel such as compensation, benefits, transfers, reductions in work force, companies sponsored training, education, tuition assistance and social recreation programs will be administered without regards to race, color, religion, sex, age or national origin.

Now Hiring Caregivers!



SYNERGY[®]
HomeCare

Fox Valley, Wisconsin

Full & Part Time Positions

- Flexible day, evening, night and weekend shifts
- County wide locations, supportive team environment
- Immediate employment & competitive wages



What are you waiting for?

Call Today 920.843.1700

To Learn More Visit Us Online: www.synergyhomecare.com

We are an equal opportunity employer. All applicants will be considered for employment without attention to race, color, religion, sex, sexual orientation, gender identity, national origin, veteran, or disability status



RESPECT **teamwork** *performance* INNOVATION

Top 5 Flexible Packaging Company

- Starting wages of \$19+/hour with potential to grow
- Due to expansion we are looking for rewinder, extrusion and press helpers
- Onsite training provided – no experience necessary
- State certified apprenticeship programs
- 401k match, company paid life and disability insurance
- Medical, dental, vision and health savings accounts



NOW HIRING

Locations:
653 N. Westhill Blvd.
Grand Chute, WI 54914

2201 S. Kensington Ave.
Appleton, WI 54915



Start building something better than you ever imagined - a career at The Home Depot. Being part of our team is so much more than just a job or paycheck. Our commitment of putting our associates and customers first creates a feeling of family, where associates are empowered to live our values and are given opportunities to grow, while being part of a winning team.

Our Fox Valley stores are hiring! APPLY TODAY!

Customer Service/Sales Positions

Text HomeDepot to 52270 or visit careers.homedepot.com

You will receive an automated text in response to your Home Depot Careers request. Message & data rates may apply. Text STOP to 52270 to stop (conf. text will be sent). Text HELP to 52270 for help. Visit http://www.homedepot.com/c/Privacy_Security for Privacy Policy.

OUR ORANGELIFE ADVANTAGE

Orange is at the heart of our culture, and everything we do here at The Home Depot – from our aprons, our stores, our sites and more. So it makes perfect sense that **OrangeLife Advantage** is how we describe the unique culture and strong benefits we offer to help our associates and their families get the most out of work and life. Some of these perks and programs include:



A PAYCHECK • SO MUCH MORE

- Regular merit increases based on performance
- Paid time off and vacataion
- Tuition Reimbursement
- 401(k) Savings Plan
- Employee Stock Purchase Plan



RESOURCES FOR HEALTHY LIVING

- Comprehensive medical, dental, and vision plans
- Insurance plans including life, home and renter's, pet and more
- CARE Solutions for Life
- Adoption Assistance



THD-ONLY DEALS & DISCOUNTS

- Discounts on cell phone carriers, gym memberships, electronics, travel and 30,000 other merchants
- Commuter benefits
- Vacation center with exclusive travel deals

*Specific benefits eligibility may depend on employment status, physical location, and years of service.

Learn more at careers.homedepot.com

The Home Depot is an Equal Opportunity/M/F/Vet/Disabled Employer.
Available positions may vary by location. Bilingual candidates are encouraged to apply.



THE J.M. SMUCKER Co

1050 Stanton St. • Ripon, WI 54971 • (920) 745-6100

Production Technician Starting Wage: **\$16.80 - \$18.30/hour**
(All shifts available)

3rd Shift Logistics Starting Wage: **\$17.80/hour**

1st & 3rd Shift Maintenance Starting Wage: **\$25.30/hour**
(Mechanics & E&I)

Employer of Choice - Here's Why . . .

- Competitive wages and benefits effective Day 1
- 401(k) Company match of 7% effective first day
- Health, prescription drug, dental and vision coverage available
- Health Savings Account (HSA) company contribution
- Disability and life insurances provided by company
- Three weeks paid vacation, option to purchase up to one additional week
- Eleven paid holidays and four personal/sick days
- Twelve weeks parental leave
- Bereavement leave
- Adoption assistance available
- Tuition assistance available
- Scholarship program for employee children
- Employee discounts
- Pet adoption, insurance and bereavement

Apply online today!
www.smuckercareers.com

(High school diploma or GED required for all positions)

E/O/E



**Tradesmen
International**

A Construction Labor Support Company.



Join the Nation's leader in skilled-trade contract work!

Excellent Pay – Competitive Benefits – Work Stability

Current Available Positions with Tradesmen International

Tradesmen International is currently accepting applications for all skill levels in the following:

- ✓ **Commercial and Residential *Carpenters (Framing & Finishing)***
 - ✓ *Commercial, Residential, & Industrial Painters*
 - ✓ *Residential, commercial, and industrial Roofers*
 - ✓ *Commercial, Electrical, & Industrial Electricians*
- ✓ **Commercial / Residential *HVAC & Sheet metal workers***
- ✓ **Commercial & Residential *Masons & Mason Tenders***
 - ✓ ***Concrete Finishers & Laborers (Wall & Flat Work)***
- ✓ **Steel / Metal Building Erectors (*Steel Siding & Steel Roofing*)**
 - ✓ *Commercial & Residential Plumbing workers*
 - ✓ **Industrial Millwrights for Local & Travel projects**
 - ✓ *Industrial Maintenance Technicians*
 - ✓ **Industrial Machinists and Machine Operators**
 - ✓ *General Construction Workers*
 - ✓ *General Industrial Workers*

All Positions are located through Northeastern & Central Wisconsin

If interested, please contact Eric at 920-725-1386 to schedule an interview.

Tradesmen International Inc. is one of North America's largest employers of skilled construction craftsmen, providing tradesmen to customers' job sites when needed. Our unique service supplies workers to our customers' everyday work force. We are redefining construction labor by raising industry standards in hiring procedures, employee skill levels, safety awareness and training practices. We provide unparalleled growth opportunities for our customers and employees. Tradesmen International is recognized as the premier source for qualified, skilled craftsmen in all trades. We are devoted to providing dedicated, verifiable-skilled, safety-minded craftsmen to the major leading industries of today and the future. We focus to provide these craftsmen reliable work, fair compensation and benefits, opportunities for skill and career growth as well as safer overall working conditions.

Tradesmen is an Equal Opportunity Employer

MAKE A DIFFERENCE.

WORK WHERE YOUR EFFORTS MATTER.

Join us in the TreeHouse.

** TreeHouse Foods, located in Manawa, WI **

Opportunities are available on all shifts:

- Line Workers
- Product Fillers
- Machine Operators
- Maintenance Technicians
- Sanitation Workers
- Material Handlers
- Quality Assurance Technicians

Why work for Treehouse Foods?

- Excellent benefits!
- Clean, pleasant environment!
- Handsome hire bonus!
- Discounted Company Store!
- Opportunities for bonuses!
- Safety first – WE CARE!

Apply directly at www.treehousefoods.com/careers or scan the code below!

EEO/AA employer



Where Every Team Member Has Value!

WE'RE HIRING

Tyson Foods

New London, WI
N3620 County Rd D

Apply online at www.tysonfoodscareers.com

Tyson Benefits Include:

- Retention Bonus- \$1000
- Referral Bonus- \$250
- Maintenance Sign on Bonus up to \$3000
- Medical, Dental, Vision Insurance
- Vacation & Holiday Pay
- 401K Retirement Plan
- Stock Options
- Tuition Reimbursement
- Career Development
- Weekly Meat Sales for Team Members

We proudly
produce
smoked
sausage
products!



Join our Team Today!!

Apply online at: www.tysonfoodscareers.com

Reach out to Human Resources with any questions –
920-982-1219

We Celebrate

- Safety Accomplishments
- Food Safety
- Community Outreach

Tyson Foods is an Equal Opportunity/Affirmative Action Employer. All qualified applicants will be considered without regard to race, national origin, color, religion, age, genetics, sex, sexual orientation, gender identity, disability or veteran status. ®/TM © 2020 Tyson Foods, Inc.



WE'RE LOOKING FOR YOU!

LICENSED PRACTICAL NURSES,
COVID TESTING TECHNICIANS,
CONTACT TRACERS,
CUSTODIANS,
AND MORE!

**Find all of our openings and apply at
<https://uwosh.edu/hr/careers/>**

To learn about our generous benefits packages, visit
<https://www.wisconsin.edu/ohrwd/benefits/>

The University of Wisconsin Oshkosh (UWO) is an equal opportunity and affirmative action employer committed to assembling a diverse, broadly trained faculty and staff. We strongly encourage women, minorities, people with disabilities and veterans to apply. UWO, in compliance with applicable laws and in furtherance of its commitment to fostering an environment that welcomes and embraces diversity, does not discriminate on the basis of race, color, national origin, religion, sex, sexual orientation, gender identity/expression, disability, or protected veteran status.



Family Born. Employee Owned.

JOIN OUR WINNING TEAM

At Van Horn Automotive Group we believe that the greatest asset to any company is its people. That's why we invest in our employees and provide them with the best tools, training, and benefits.



VAN HORN JOB BENEFITS

- Health, Dental, Vision
- Tuition Reimbursement
- Scholarships
- Tool Purchase Program
- Employee Stock Ownership Plan
- Paid Volunteer Time
- Wellness Program
- Flexible Hours
- Paid Training
- Gym Membership Reimbursement

CAREER OPPORTUNITIES

SERVICE & PARTS

- Service Technician
- Parts Advisor
- Collision Repair Technician
- Detail Specialist
- Service Advisor

SALES

- Finance Manager
- Sales Consultant
- Lot Attendant

BUSINESS DEVELOPMENT

- Customer Service Representative
- Inventory Control Specialist
- Marketing Specialist

ADMINISTRATIVE

- Accounting
- Receptionist
- Information Technology

STUDENT OPPORTUNITIES

- Internships
- Youth Apprenticeship/Co-Op Program

FOR MORE INFORMATION OR TO APPLY:
VANHORNCAREERS.COM



WAUPACA FOUNDRY, INC.

1955 Brunner Drive

P.O. Box 249

Waupaca, WI 54981

PHONE (715) 258-6611

WEB WaupacaFoundry.com

Looking for a career? Think Waupaca Foundry Inc.

Waupaca Foundry makes gray, ductile iron and component parts for leading manufacturers such as John Deere, Toyota, Ford, and Nissan just to name a few. Waupaca Foundry offers great pay and benefits combining a large company with the feel of a close family. We are currently hiring Production, Maintenance and Electrical Maintenance positions as well as some specialized positions. Please see jobs.waupacafoundry.com for a complete list of opportunities and to apply.

Waupaca Foundry offers competitive wages and exceptional benefits, including:

- **Medical, dental, vision**
- **Short and long term disability**
- **Life insurance**
- **401(k)**
- **Employer funded retirement plan**
- **Paid vacations/holidays**
- **Wellness program**
- **Fitness membership**
- **Employee assistance program (EAP)**
- **Employer supported career development, including tuition reimbursement**

CAST YOUR OWN FUTURE

Waupaca Foundry is looking for driven adults to join its skilled workforce. Join the industry leader and be part of a legacy of pride. Come grow with us.

Visit: Jobs.WaupacaFoundry.com

Waupaca Foundry is an Equal Opportunity Employer. Women and minorities are encouraged to apply.

NOW HIRING

\$45-\$55K ANNUALLY



Opportunities at WEC Energy Group

We are one of the nation's largest electric generation and distribution and natural gas delivery holding companies, serving approximately 4.5 million customers in Wisconsin, Illinois, Michigan and Minnesota. We offer professional, technical, field, office and intern/student opportunities in various specialties.

Electric Distribution Controller (System Operator) 6065BR – Green Bay, WI

Fleet Technician 5888BR – Appleton, WI

Material Specialist 5969BR – Green Bay, WI

Operations Supervisor 5859BR – Appleton, WI

Risk and Controls – Internal Auditor 5795BR – Milwaukee, WI

Please contact TalentAcquisitionTeam@wecenergygroup.com with any questions.

WEC Energy Group and its subsidiaries are Equal Opportunity / Affirmative Action employers. All qualified applicants will receive consideration for employment without regard to race, color, religion, sex, sexual orientation, gender identity, national origin, disability, protected veteran status and any other protected class.

If you are talented, energetic and ready for a career with a future, then a job with us might be your next big career move. Learn more at www.wecenergygroup.com/careers.



PEOPLES GAS®

NORTH SHORE GAS®





Winnebago County

The Wave of the Future

WINNEBAGO COUNTY

112 Otter Avenue
Oshkosh WI 54901
(920) 232-3460

www.co.winnebago.wi.us
employment@co.winnebago.wi.us

NOW HIRING

Competitive Pay & Benefits include:

- Health, Dental, Life, & Long-Term Disability insurance
- Paid time off
- Paid sick leave
- Wisconsin Retirement System
- Deferred Compensation Program

Not CNA certified? We'll train you!

Apply for "Hospitality Aide/CNA Trainee" and we'll pay you while you earn your CNA certification!

CURRENT VACANCIES:

POSITION	DEPARTMENT	SALARY RANGE
Bailiff	Circuit Courts	\$80.00/Day
Custodian	Facilities	\$13.88- \$15.30/Hr.
Maintenance Technician	Facilities	\$21.64 - \$24.08/Hr.
Crisis Center Specialist Relief	Human Services	\$18.51/Hr.
Social Work Specialist	Human Services	\$26.49 - \$29.20/Hr.
CNA	Park View Health Center	\$15.07 - \$16.62/Hr.
LPN	Park View Health Center	\$23.80 - \$26.49/Hr.
RN	Park View Health Center	\$29.33 - \$32.34/Hr.
COVID-19 Response	Public Health	\$24.95/Hr.
Corrections Officer	Sheriff's	\$26.17 - \$33.38/Hr.
Dispatcher	Sheriff's	\$23.80 - \$26.49/Hr.
Patrol Officer	Sheriff's	\$26.17 - \$33.38/Hr.

APPLY TODAY

Check our website to see all of our current vacancies

New openings posted regularly!

<https://www.co.winnebago.wi.us/human-resources/employment-opportunities>

Winnebago County is an equal opportunity employer.



\$1,800 SIGN-ON BONUS!

NOW HIRING

MAKE YOUR MARK WITH US!

Start and advance your career with the makers of Bernzomatic hand torches, Worthington Industries.

At Worthington Industries, our focus is on making better solutions for our customers, better lives for our employees, better returns for our shareholders and better stewards for our communities. All while following a Philosophy that puts people first. Join our team and help make better possible! Worthington Industries is an equal employment opportunity employer.

- **Competitive Pay Plus Shift Premiums Starting at \$17.50 - \$20.50**
- **Generous Benefits Package Including Immediate coverage for Medical, Dental and Vision**
- **Disability, 401k and Incentive Program**
- **On-the-Job-Training**
- **\$1,800 Sign-on Bonus!**



Learn How You Can Make Your Mark and Apply Today!

Visit Jobs.WorthingtonIndustries.com Or Call Us: 920.849.1740
300 E. Breed Street Chilton, WI 53014

HOME OF
BERNZOMATIC

MAKERS OF BETTER





WOW Logistics is **Now Hiring** Warehouse Workers for **ALL SHIFTS!**

Filling positions in Appleton,
Menasha, and Grand Chute

We put a premium on our people! Benefits include:

- LOW monthly premiums and LOW maximum out of pocket
- 401K with company match
- Generous paid vacation
- Vision, Dental, and Life insurance
- FLEX spending

Apply online at [wowlogistics.com/careers](https://www.wowlogistics.com/careers)

Contact Steve Heise at
stevehe@wowlogistics.com to learn more!

WOW Logistics is an equal opportunity employer and is committed to diversity and inclusion in the workplace. We do not discriminate based on race, religion, color, disability, gender, sexual orientation, gender identity, national origin, Veteran status, any other factor protected by applicable federal, state or local laws.

